

***Comparative Analysis of
Educational Indicators
2003-04 & 2004-05***

**Dr. Pervez. A. Shami
(Izaz-e-Fazeelat)
Dawood Shah
Sarwat Butt**

**Academy of Educational Planning and Management
Ministry of Education
Islamabad
www.aepam.edu.pk
2006**

AEPAM, Islamabad, 2006

Cataloging in Publication Data

Main entry under authors:

Dr. P. A. Shami, Dawood Shah and Sarwat Hamid Butt

Comparative Analysis of Educational Indicators 2003-04 & 2004-05= under national Educational Management Information System (NEMIS).- Islamabad: AEPAM 2006.-(AEPAM/NEMIS Research Study No. 208)

1. Educational Indicators 2. Comparative Analysis 3. Comparative Education

371.0212

ISBN – 969-444-149-8

Preface

Academy of Educational Planning and Management (AEPAM) facilitates Ministry of Education in policy formulation and development of education in Pakistan. AEPAM is maintaining National Educational Management Information System (NEMIS) to assist the planners, managers and policy makers at various levels. Moreover, it produces annual National Education Statistics Report on various aspects of education.

NEMIS has been functioning in Academy of Educational Planning and Management (AEPAM) since 1993. NEMIS is the coordinating unit for education statistics/ data collection, compilation, and report generation at national level. Moreover, it also provides technical support to Provincial/ Regional EMISs to enhance their data generation capacity. AEPAM is playing leading coordination role in addressing crucial issues and problems in respect of compatibility of questionnaires used for Annual School Census, database structure, data dictionary, definition of terms, data requirements and quality of data. AEPAM has been providing baseline education data to various agencies for planning, monitoring and policy formulation in education.

Educational Indicators provide a scale against which a change can be measured. Indicators make it possible to measure that how far or how close one is from an objective and to identify problematic or unacceptable situation. Educational Indicators have been computed as per procedure being followed in the International Agencies. The comparative analysis of educational indicators for the years 2003-04 & 2004-05 have been reflected in view of the national and International demands which include EFA Core Indicators, Millennium Development Goals, UIS Indicators and PRSP. Moreover, Comparative analysis of Educational Indicators has also been made at Provincial/Regional levels. The data analyses will facilitate policy makers, Education managers at various levels. More than 15 indicators have been reported. Comparison has been made by gender, region, level and stage for both public and private sectors.

I would like to express my gratitude to Mr. Dawood Shah (Project Coordinator NEMIS) and Miss. Sarwat Hamid Butt (Education Statistician-NEMIS) for producing this report. Mr. Imam-ud-din Sheikh, MirzaTauhid-ud-din, Mr. Nasir Amin, Mr. Khurram Ali and Akhter Tatla also deserve special thanks for their cooperation.

Dr.Pervez.A.Shami
(Izaz-e-Fazeelat)

Director General

Contents

Preface	iii
Summary	1
1. Educational Indicators	3
1.1 Development of Indicators	3
1.2 Classification of Indicators	4
1.3 Quality of an Indicator	5
1.4 Types of Indicators	5
1.5 Categories of Indicators	8
1.6 UIS International Indicators	8
1.7 Millennium Development Goals	9
1.8 Core EFA Indicators	10
1.9 Role of Indicators	11
1.10 Importance of Indicators	11
1.11 Where do Indicators fit in?	11
2. Comparative Summary of Educational Indicators	12
3. Important Indicators in Pakistan	30
3.1 Overall Enrolment Ratio	30
3.2 Gross Enrolment Ratio	31
3.3 Net Enrolment Ratio	35
3.4 Gender Parity Index	40
3.5 Sex Ratio	44
3.6 Pupil Teacher Ratio	49
3.7 Teacher School Ratio	49
3.8 Student School Ratio	49
3.9 % of Female Students	54
3.10 % of Female Teachers	58
3.11 Participation of Private Sector	63

3.12	Participation of Other Public Sector	65
3.13	Apparent (gross) Intake Rate	67
3.14	Transition Rate	68
3.15	Grade Ratio/ Progression Rate	70
3.16	Completion Rate	72
3.17	Literacy Rate	75
3.18	Learning Achievements	76
3.19	Budget Allocation	77
	ANNEXURE – A	78
	ANNEXURE – B	83
	About the Academy	84

Summary
Educational Indicators in Pakistan
2004-05

Indicators	Male	Female	Total
Overall Gross Enrolment Ratio	71.95	54.91	63.73
GER (Primary)	99.88	76.72	88.68
GER (Middle)	48.42	36.15	42.51
GER (High)	30.8	22.54	26.85
Net Enrolment Ratio	56.12	42.83	49.71
NER (Primary)	77.91	59.84	69.17
NER (Middle)	37.77	28.19	33.16
NER (High)	24.02	17.58	20.94
Apparent (Gross) Intake Rate*	82.67	65.24	74.24
Transition Rate: Primary-Middle*	79.5	83.3	80.9
Transition Rate: Middle-High*	83.4	81	83.4
Grade Ratio: Class 5-6*	79	83	81
Grade Ratio: Class 9-10*	80	92	84
Completion Rate: Primary*	43.7	51.1	46.4
Completion Rate: Middle*	70.6	69.8	70.3
Literacy Rate (10+)	65	40	53

Including Public, Private and Other-public Sector

*: Including Public Sector Only

Educational Indicators in Pakistan 2004-05

Indicators	Value	Indicators	Value
Gender Parity Index	0.76	Teacher School Ratio*	4
Gender Parity Index (Primary)	0.77	Teacher School Ratio (Primary)*	3
Gender Parity Index (Middle)	0.75	Teacher School Ratio (Middle)*	8
Gender Parity Index (High)	0.73	Teacher School Ratio (High)*	18
Sex Ratio	141	% of Female Students (Primary)	42
Sex Ratio (Primary)	139	% of Female Students (Middle)	41
Sex Ratio (Middle)	144	% of Female Students(High)	40
Sex Ratio (High)	149	% of Female Teachers(Primary)	46
Pupil Teacher Ratio*	30	% of Female Teachers(Middle)	61
Pupil Teacher Ratio (Primary)*	34	% of Female Teachers(High)	49
Pupil Teacher Ratio (Middle)*	24	% of Private Institutions	21
Pupil Teacher Ratio (High)*	27	% of Private Students	33
Students School Ratio*	124	% of Private Teachers	36
Students School Ratio (Primary)*	90	% of Other-Public Institutions	2
Students School Ratio (Middle)*	186	% of Other-Public Students	2
Students School Ratio (High)*	484	% of Other-Public Teachers	2

Including Public, Private and Other-public Sector

*: Including Public Sector Only

Introduction

Developing the data analysis strategy is an important part of the planning process and it helps to know the options for data analysis, with the various strengths and weaknesses. Of course, data analysis in education sector is important in "doing". Due to the Educational Indicators, different trends in Education Sector of any country can easily be judged. Educational Indicators are required for policy making and planning. Therefore development of Educational Indicators is the need of time as they help the decision makers for effective and better decisions to solve the problems of education system and to take concrete steps for its improvement and development.

1. Educational Indicators

Indicators are the variables/factors used to measure progress towards the goals/ objectives. Educational Indicators reflect the important aspects of the education system.

For example, progress towards achieving Universal primary education can be tracked by using the net enrolment ratio in primary education.

Indicators provide a scale against which a change can be measured. Indicators make it possible to measure that how far or how close one is from an objective and to identify problematic or unacceptable situation.

1.1 Development of Indicators

Education Statistics is the important tool for educational planners for the formulation of educational policies and plans. Education Statistics is of two types: Stock Statistics and Flow Statistics. Stock Statistics describes the situation of an education system at given point of time. It indicates the number of educational institutions, number of students, number of teachers and availability of physical facilities on reference data. Flow Statistics relates to what happens to the students and teachers between given years that is how they move within and through education cycle.

Stock and Flow Statistics play an important role to see the changes/variations in the Education Sector but Educational Indicators and their proper interpretation is the only way to know, in depth, about the real picture of the education in the country.

Educational Indicators are related to "Stock" and "Flow" statistics. Ratios and Rates are used to measure these statistics respectively. In Education Sector particularly the Indicators computed by using "Stock Statistics" are called "Ratios" and the Indicators computed by using "Flow Statistics" are known as "Rates".

Some important Ratios and Rates are given as:

- Ratios (stock)

1. Enrolment Ratio

Overall enrolment ratio, Level enrolment ratio, Age Specific enrolment ratio, Gross enrolment ratio, Gross (level) enrolment ratio, Net enrolment ratio

2. Pupil Teacher Ratio

3. Teacher/School Ratio

4. Students/School Ratio

5. Student/Class Ratio

6. Sex enrolment Ratio

- Rates (flow)

1. Literacy rate

3. Participation rate

5. Survival rate

7. Retention rate

2. Progression rate

4. Completion rate

6. Dropouts rate

1.2 Classification of Indicators

Indicators can be classified as Quantitative and Qualitative Indicators.

Quantitative Indicators statistically measure the amount or the value of inputs or resources available e.g. gross enrolment ratio, cost per student and increase or decrease in dropout rate.

Qualitative Indicators measure the quality of the output of the programme or system and also the quality of the inputs e.g. the measurement of skill and knowledge, or attitude.

1.3 Quality of an Indicator

A useful tool in assessing the quality of an indicator is the 'SMART' method. Indicators should be:

- | | |
|-------------------------|--|
| S : <u>Specific</u> | Clearly and directly related to the objectives or output they are supposed to measure |
| M : <u>Measurable</u> | Data definition should be clear and collection feasible |
| A : <u>Attributable</u> | The indicator should measure changes that are direct consequences of the project intervention |
| R : <u>Relevant</u> | The indicator should be relevant to ones objectives/goals |
| T : <u>Timely</u> | It should be possible to collect and analyze data fairly and quickly to ensure relevance of information within time limit. |

1.4 Types of Indicators

There are many types of indicators but the most commonly used Educational Indicators are as follows:

- **Input Indicators**
Inputs are the resources used in the education production activity. They measure the human, physical and fiscal resources used to run the education process. The main ingredients include existing human, financial, educational resources, physical facilities, goals/objectives, policies, laws and regulations and community resources.
- **Process Indicator**
The process refers to the means by which educational inputs are transformed in to outputs. They are used to link/interact between inputs and outputs. In other words the educational means, methods,

procedures and materials that mediates between inputs and outputs, including school operations, management role and curriculum quality.

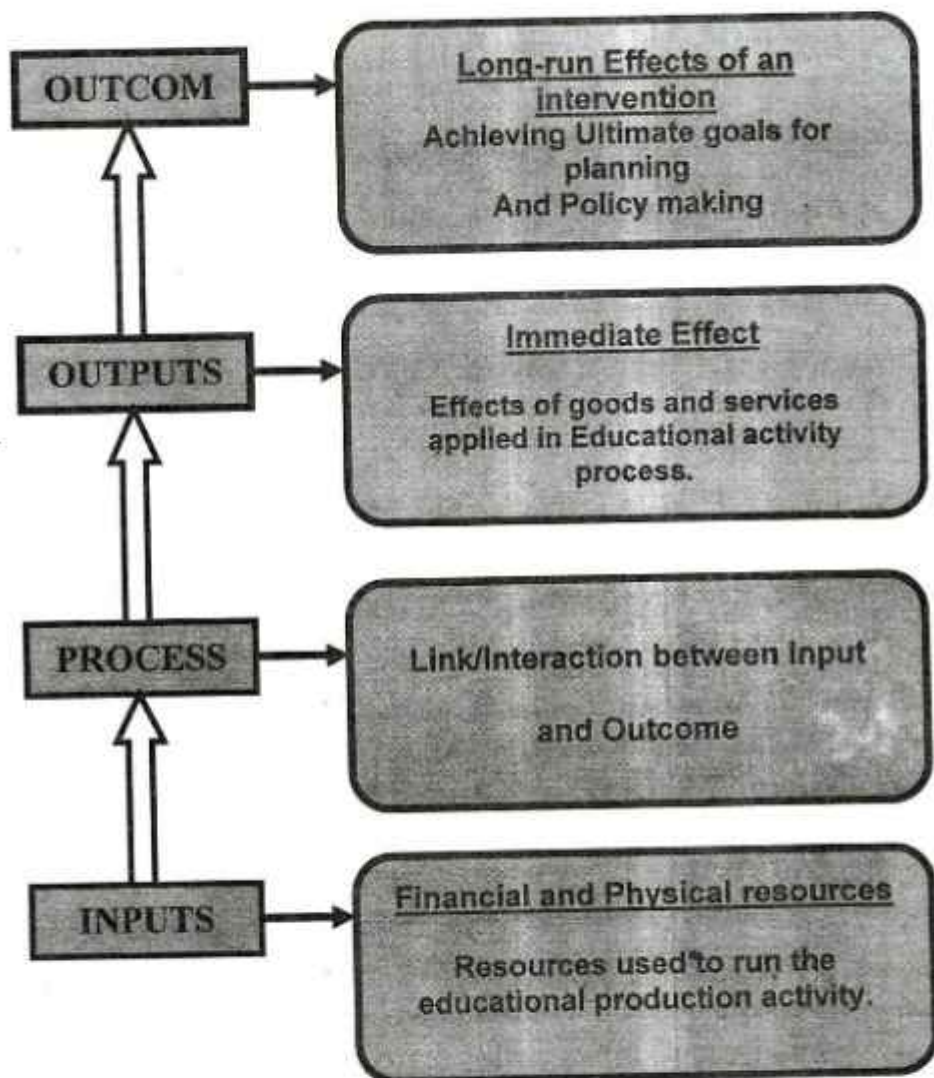
- **Output Indicators**

They measure the immediate effects of goods and services that are produced by the inputs. Simply it is the aggregated products of the educational system, which are delivered or deliverable to the society for example, academic achievement, the number of graduates and dropout, program completers, aspiration for higher education and certified licensees etc.

- **Outcome Indicators**

They measure the long-run effects of outputs in and for society and the community. They capture access to, use of, and satisfaction with public services or they measure the effects/results of intervention on individuals satisfaction. For example self-sufficient, self-reliant, productive individual, and contributing to self and to others.

Logical Framework of Indicators:



1.5 Categories of Indicators

The major categories of the Educational Indicators are:

Access and Participation

- Gross Intake Rate
- Net Intake Rate
- Overall Enrolment Ratio
- Gross Enrolment Ratio (by level)
- Net Enrolment Ratio (by level)

Equity

- Gender Parity Index (by level & location)
- Sex Ratio (by level & location)

Internal Efficiency

- Repetition Rate
- Drop-out Rate
- Promotion Rate
- Survival Rate
- Graduation Rate
- Transition Rate

Quality Indicators

- Pupil Teacher Ratio
- Teacher School Ratio
- Student Class Room Ratio
- No. of Teachers by Qualification
- Students Achievement Level

1.6 UIS International Indicators

Access

- % of new entrants with prior schooling
- Gross (apparent) intake rate
- Net intake rate

- %Over-age students
- %Under-age students

Participation

- Gross enrolment rate
- Net enrolment rate

Performance

- Repetition rate
- Drop-out rate
- Promotion rate
- Survival rate
- Graduation Rate
- Transition Rate

Quality of Education

- Pupil-teacher ratio
- Student-class room ratio (by grade, by level)
- Number of students per textbook (by subject)
- Number of teachers (by subject)
- Number of teachers (by qualifications)
- % of students schooled in double shifts
- % of students schooled in mixed-grade classes
- % of students attending a school > 3 km from their homes

Education Expenditure

- Public current expenditure on primary education as % of total public expenditure on education
- Public current exp. on primary education as a % of GNP per capita
- Public current expenditure on primary education as a % of GNP

1.7 Millennium Development Goals

Target 3

- Net Enrolment Ratio in Primary Education

- Completion/Survival rate to Grade 5
- Adult Literacy Rate (15-24 Years Old)

Target 4

- Gender Parity Index for Primary Education
- Gender Parity Index for Secondary Education
- Gender Parity Index for Tertiary Education

1.8 Core EFA Indicators

Enrolment Indicators:

- ECE: Gross enrolment ratio in Early Childhood Education (ECE)
- G1ECE: Percentage of Grade 1(new entrants) with ECE experience
- AIR: Apparent (gross) intake rate in primary education
- NIR: Net intake rate in primary education
- GER: Gross enrolment ratio
- NER: Net enrolment ratio

Expenditure Indicators:

- Public current expenditure on primary education as a % of GNP
- Per pupil, as % of GNP per capita
- Public expenditure on primary education as a % of total public expenditure on education

Teachers Indicators:

- Percentage of primary school teachers having the required Academic qualification
- Percentage of primary school teachers who are certified to teach
according to national standards (Professional Qualification)

Efficiency Indicators:

- PTR: Pupil teacher ratio
- RRG: Repetition rates by grade
- SRG: Survival rate to grade 5
- CoEff: Coefficient of Efficiency at grade 5 and at the final grade

Learning Achievement and Outcome Indicators:

ACHIEVEMENT: Percentage of pupils who master basic learning competencies

LR: Literacy rate of 15-24 years

Adult Literacy and Gender Parity Indicators:

LITERACY: Adult literacy rate; % of literate population aged 15+ and Gender parity Index (GPI) i.e. ratio of female to male Literacy rates

1.9 Role of Indicators

Indicators play a very important role in monitoring and evaluation of implementing the Educational policy. The selection and formulation of the indicators depend upon the objectives or goals of the policy and action plan. Monitoring and evaluation is not meaningful without a specific action plan with numerical targets and time limit. Once a goal has been set, indicators can be used to monitor progress at various stages.

1.10 Importance of Indicators

- Increasing the quality and effectiveness of education and training systems.
- Facilitating the access of all to the education and training systems
- Opening up education and training systems to the wider world

1.11 Where do the Indicators fit in?

- As a guide to designing interventions in order to achieve specific targets/goals.
- To capture progress in achieving certain targets
- As proxy instruments for evaluation –
(In a multi-variate environment, when other factors are duly considered, to assess if the interventions have made any progress towards achieving targets)

- Who is monitoring whom?
- Need to re-think the monitoring from the perspective of the national government

2. COMPARATIVE SUMMARY OF EDUCATIONAL INDICATORS

In the comparative summary of Educational Indicators for the years 2003-04 & 2004-05, the following symbols are used for the purpose of analysis of indicators. Description of symbols is as under:

1. Increase:



2. Decrease:



3. No Change:



4. Data not available: **

INDICATORS AT A GLANCE

Indicator (Province/Regions)	2003-04	2004-05	Change
1. Overall Gross Enrolment Ratio (Including Primary, Middle & High level of Public and Private Sector)			
Pakistan	59.57	62.38	△
Punjab	59.09	62.26	△
Sindh	59.09	61.79	△
NWFP	62.29	65.67	△
Balochistan	34.65	35.63	△
AJK**	**	**	**
FANA**	**	**	**
FATA	43.56	44.96	△
ICT	99.25	98.11	▽

Indicator (Province/Regions)	2003-04	2004-05	Change
2. Gross Enrolment Ratio (Primary) (Including Public and Private Sector)			
Pakistan	83.74	86.69	△
Punjab	81.98	85.75	△
Sindh	83.86	86.53	△
NWFP	89.56	91.87	△
Balochistan	53.00	54.49	△
AJK**	**	**	**
FANA**	**	**	**
FATA	70.30	70.76	△
ICT	117.74	113.00	▽

Gross Enrolment Ratio (Middle) (Including Public and Private Sector)			
Pakistan	39.48	41.83	△
Punjab	40.70	43.13	△
Sindh	34.64	36.63	△
NWFP	41.70	45.79	△
Balochistan	19.74	20.26	△
AJK**	**	**	**
FANA**	**	**	**
FATA	20.62	22.14	△
ICT	85.20	88.84	△

Indicator (Province/Regions)	2003-04	2004-05	Change
Gross Enrolment Ratio (High) (Including Public and Private Sector)			
Pakistan	24.91	26.23	△
Punjab	24.63	25.99	△
Sindh	27.20	27.90	△
NWFP	23.92	26.82	△
Balochistan	11.55	12.11	△
AJK**	**	**	**
FANA**	**	**	**
FATA	10.03	10.79	△
ICT	67.31	66.38	▽
3. Net Enrolment Ratio (Primary) (Including Public and Private Sector)			
Pakistan	65.32	67.62	△
Punjab	63.95	66.88	△
Sindh	65.41	67.50	△
NWFP	69.85	71.66	△
Balochistan	41.34	42.50	△
AJK**	**	**	**
FANA**	**	**	**
FATA	54.83	55.19	△
ICT	91.83	88.14	▽

Indicator (Province/Regions)	2003-04	2004-05	Change
------------------------------	---------	---------	--------

Net Enrolment Ratio (Middle) (Including Public and Private Sector)			
Pakistan	30.79	32.63	△
Punjab	32.56	33.65	△
Sindh	27.02	28.57	△
NWFP	32.53	35.72	△
Balochistan	15.40	15.80	△
AJK**	**	**	**
FANA**	**	**	**
FATA	16.08	17.27	△
ICT	66.45	69.29	△
Net Enrolment Ratio (High) (Including Public and Private Sector)			
Pakistan	19.43	20.46	△
Punjab	19.70	20.27	△
Sindh	21.21	21.76	△
NWFP	18.66	20.92	△
Balochistan	9.01	9.44	△
AJK**	**	**	**
FANA**	**	**	**
FATA	7.82	8.42	△
ICT	52.50	51.77	▽

Indicator (Province/Regions)	2003-04	2004-05	Change
------------------------------	---------	---------	--------

4. Overall Gender Parity Index (Including Primary, Middle & High level of Public and Private Sector)			
Pakistan	0.76	0.76	↔
Punjab	0.82	0.85	△
Sindh	0.74	0.76	△
NWFP	0.51	0.54	△
Balochistan	0.66	0.65	▽
AJK**	**	**	**
FANA**	**	**	**
FATA	0.33	0.32	▽
ICT	1.03	0.96	▽
Gender Parity Index (Primary) (Including Public and Private Sector)			
Pakistan	0.75	0.77	△
Punjab	0.82	0.86	△
Sindh	0.70	0.73	△
NWFP	0.55	0.59	△
Balochistan	0.68	0.66	▽
AJK**	**	**	**
FANA**	**	**	**
FATA	0.37	0.36	▽
ICT	0.95	0.89	▽

Indicator (Province/Regions)	2003-04	2004-05	Change
------------------------------	---------	---------	--------

Gender Parity Index (Middle) (Including Public and Private Sector)			
Pakistan	0.77	0.75	△
Punjab	0.82	0.84	▽
Sindh	0.82	0.82	⇒
NWFP	0.42	0.45	△
Balochistan	0.59	0.59	⇒
AJK**	**	**	**
FANA**	**	**	**
FATA	0.17	0.15	△
ICT	1.15	1.07	▽
Gender Parity Index (High) (Including Public and Private Sector)			
Pakistan	0.75	0.73	▽
Punjab	0.78	0.84	△
Sindh	0.84	0.82	▽
NWFP	0.39	0.37	▽
Balochistan	0.55	0.56	△
AJK**	**	**	**
FANA**	**	**	**
FATA	0.13	0.11	▽
ICT	1.20	1.10	▽

Indicator (Province/Regions)	2003-04	2004-05	Change
------------------------------	---------	---------	--------

5. Overall Sex Ratio			
<i>(Including Primary, Middle & High level of Public and Private Sector)</i>			
Pakistan	147	141	▽
Punjab	131	125	▽
Sindh	149	144	▽
NWFP	206	195	▽
Balochistan	168	170	△
AJK	124	114	▽
FANA	165	145	▽
FATA	337	349	△
ICT	107	112	△
Sex Ratio (Primary)			
<i>(Including Public and Private Sector)</i>			
Pakistan	146	139	▽
Punjab	130	124	▽
Sindh	154	147	▽
NWFP	192	180	▽
Balochistan	160	163	△
AJK	112	103	▽
FANA	140	130	▽
FATA	296	302	△
ICT	114	118	△

Indicator (Province/Regions)	2003-04	2004-05	Change
------------------------------	---------	---------	--------

Sex Ratio (Middle) (Including Public and Private Sector)			
Pakistan	149	144	▽
Punjab	131	127	▽
Sindh	137	136	▽
NWFP	247	231	▽
Balochistan	193	190	▽
AJK	136	125	▽
FANA	237	189	▽
FATA	659	752	△
ICT	97	105	△
Sex Ratio (High) (Including Public and Private Sector)			
Pakistan	155	149	▽
Punjab	138	128	▽
Sindh	135	138	△
NWFP	268	275	△
Balochistan	207	204	▽
AJK	185	159	▽
FANA	373	210	▽
FATA	862	1019	△
ICT	93	102	△

Indicator (Province/Regions)	2003-04	2004-05	Change
6. Pupil Teacher Ratio (Including Primary, Middle, & High levels of Public Sector only)			
Pakistan	29	30	△
Punjab	31	34	△
Sindh	25	27	△
NWFP	33	31	▽
Balochistan	22	21	▽
AJK	23	21	▽
FANA	30	28	▽
FATA	27	26	▽
ICT	31	32	△
Pupil Teacher Ratio (Primary) (Including Public Sector only)			
Pakistan	33	34	△
Punjab	34	37	△
Sindh	28	30	△
NWFP	40	37	▽
Balochistan	27	27	↔
AJK	37	34	▽
FANA	36	34	▽
FATA	31	31	↔
ICT	42	43	△

Indicator (Province/Regions)	2003-04	2004-05	Change
------------------------------	---------	---------	--------

Pupil Teacher Ratio (Middle) (Including Public Sector only)			
Pakistan	22	24	△
Punjab	25	30	△
Sindh	17	17	➤
NWFP	14	14	➤
Balochistan	13	14	△
AJK	22	20	▽
FANA	28	25	▽
FATA	18	18	➤
ICT	64	67	△
Pupil Teacher Ratio (High) (Including Public Sector only)			
Pakistan	26	27	△
Punjab	31	34	➤
Sindh	19	19	➤
NWFP	23	24	△
Balochistan	20	18	▽
AJK	18	16	▽
FANA	22	21	▽
FATA	22	22	➤
ICT	11	11	➤

Indicator (Province/Regions)	2003-04	2004-05	Change
------------------------------	---------	---------	--------

7. Teacher School Ratio (Including Primary, Middle & High levels of Public Sector only)			
Pakistan	4	4	➤
Punjab	5	5	➤
Sindh	3	3	➤
NWFP	4	4	➤
Balochistan	4	3	▼
AJK	5	5	➤
FANA	3	3	➤
FATA	4	4	➤
ICT	13	12	▼
Teacher School Ratio (Primary) (Public Sector only)			
Pakistan	3	3	➤
Punjab	3	3	➤
Sindh	2	2	➤
NWFP	3	3	➤
Balochistan	2	2	➤
AJK	1	1	➤
FANA	2	2	➤
FATA	3	3	➤
ICT	9	9	➤

Indicator (Province/Regions)	2003-04	2004-05	Change
------------------------------	---------	---------	--------

Teacher School Ratio (Middle) (Public Sector only)			
Pakistan	8	8	➤
Punjab	10	9	▼
Sindh	4	4	➤
NWFP	6	6	➤
Balochistan	11	11	➤
AJK	7	7	➤
FANA	5	5	➤
FATA	9	9	➤
ICT	12	12	➤
Teacher School Ratio (High) (Public Sector only)			
Pakistan	18	18	➤
Punjab	19	19	➤
Sindh	19	18	▼
NWFP	14	15	△
Balochistan	22	24	△
AJK	18	17	▼
FANA	12	13	△
FATA	17	18	△
ICT	22	21	▼

Indicator (Province/Regions)	2003-04	2004-05	Change
------------------------------	---------	---------	--------

8. Student School Ratio

(Including Primary, Middle & High & levels of Public Sector only)

Pakistan	118	124	△
Punjab	156	172	△
Sindh	77	80	△
NWFP	129	126	▽
Balochistan	73	74	△
AJK	105	97	▽
FANA	93	93	⇨
FATA	103	103	⇨
ICT	390	394	△
Student School Ratio (Primary)			
(Public Sector only)			
Pakistan	85	90	△
Punjab	97	110	△
Sindh	67	71	△
NWFP	120	116	▽
Balochistan	46	46	⇨
AJK	53	48	▽
FANA	66	66	⇨
FATA	81	80	▽
ICT	370	373	△

Indicator (Province/Regions)	2003-04	2004-05	Change
------------------------------	---------	---------	--------

Student School Ratio (Middle) (Public Sector only)			
Pakistan	177	186	△
Punjab	247	272	△
Sindh	67	67	↔
NWFP	85	84	▽
Balochistan	148	151	△
AJK	149	133	▽
FANA	134	131	▽
FATA	161	169	△
ICT	745	772	△
Student School Ratio (High) (Public Sector only)			
Pakistan	475	484	△
Punjab	597	627	△
Sindh	361	343	▽
NWFP	330	348	△
Balochistan	432	426	▽
AJK	308	262	▽
FANA	268	268	↔
FATA	372	394	△
ICT	232	223	▽

Indicator (Province/Regions)	2003-04	2004-05	Change
------------------------------	---------	---------	--------

9. Apparent Gross Intake Rate (Including Public Sector only)			
Pakistan	70.49	74.24	△
Punjab	56.29	62.11	△
Sindh	100.35	99.56	▽
NWFP	78.87	82.06	△
Balochistan	65.80	67.27	△
AJK**	**	**	**
FANA**	**	**	**
FATA	81.77	87.52	△
ICT	76.58	66.06	▽
10. Transition Rate (Primary to Middle) (Including Public Sector only)			
Pakistan	83.67	80.93	▽
Punjab	93.81	87.61	▽
Sindh	67.86	65.98	▽
NWFP	73.54	77.73	△
Balochistan	82.89	80.01	▽
AJK	88.92	80.47	▽
FANA	76.66	70.09	▽
FATA	71.31	70.64	▽
ICT	101.23	100.43	▽

Indicator (Province/Regions)	2003-04	2004-05	Change
------------------------------	---------	---------	--------

Transition Rate (Middle to High)			
(Including Public Sector only)			
Pakistan	86.68	83.43	▽
Punjab	86.85	81.53	▽
Sindh	101.36	91.28	▽
NWFP	79.56	83.70	△
Balochistan	81.34	78.30	▽
AJK	70.43	58.31	▽
FANA	73.16	79.22	▽
FATA	72.67	78.14	△
ICT	84.62	92.61	△
11. Completion Rate (Primary)			
(Including Public Sector only)			
Pakistan	46.74	46.36	▽
Punjab	51.78	48.51	▽
Sindh	31.18	30.42	▽
NWFP	51.46	64.96	△
Balochistan	32.47	31.57	▽
AJK	84.79	75.77	▽
FANA	58.29	66.60	△
FATA	41.19	37.94	▽
ICT	84.65	90.82	△

Indicator (Province/Regions)	2003-04	2004-05	Change
Completion Rate (Middle) (Including Public Sector only)			
Pakistan	71.64	70.32	▽
Punjab	74.43	69.20	▽
Sindh	82.03	82.17	△
NWFP	61.38	72.41	△
Balochistan	58.93	60.16	△
AJK	56.44	46.85	▽
FANA	52.49	58.22	△
FATA	52.83	56.48	△
ICT	91.15	82.84	▽
12. Grade Retention Ratio (Class-5 to Class-6) (Including Public Sector only)			
Pakistan	83.67	80.93	▽
Punjab	93.81	87.61	▽
Sindh	67.86	65.98	▽
NWFP	73.64	77.73	△
Balochistan	82.89	80.01	▽
AJK	88.92	80.47	▽
FANA	76.66	70.09	▽
FATA	71.31	70.64	▽
ICT	101.23	100.43	▽

Indicator (Province/Regions)	2003-04	2004-05	Change
------------------------------	---------	---------	--------

Grade Retention Ratio (Class-9 to Class-10) (Including Public Sector only)			
Pakistan	83.07	84.32	△
Punjab	81.61	85.37	△
Sindh	95.76	85.77	▽
NWFP	78.36	84.41	△
Balochistan	89.03	89.70	△
AJK	63.36	61.36	▽
FANA	64.20	71.61	△
FATA	86.43	79.60	▽
ICT	80.57	79.72	▽

13. Learning Achievement (Including Public Sector only)			
Maths	46	45	▽
Urdu	50	57	△
Science	59	52	▽

14. Literacy Rate (Age 10+)			
Pakistan	52	53	△

3. Important indicators in Pakistan

Some important indicators in Pakistan by using two years NEMIS data (2003-04 and 2004-05) are calculated here for the purpose of comparison and to describe the changes in Education System at National level as well as at Province/Regions level. Data/Statistical Tables are given in ANNEXTURE -A, List of Sources in ANNEXTURE-B.

3.1 Overall Enrolment Ratio (OER)

It is defined as "the ratio between the total enrolment at all levels of education and the population of the corresponding age group". It is also known as Overall Gross Enrolment Ratio.

$$\text{OER} = \frac{\text{Total enrolment at all levels of education in year } t}{\text{Total population of corresponding age group in year } t} \times 100$$

Public, Private and Other Public Sector

Comparison of Overall Enrolment Ratio in Pakistan (including Public, Private and Other Public Sector) from Primary to High Level for the years 2003-04 & 2004-05.

OVERALL ENROLMENT RATIO BY STAGE IN PAKISTAN

Overall ER	2003-04			2004-05		
	Male	Female	Total	Male	Female	Total
Pakistan	69.39	51.01	60.54	71.95	54.91	63.73

Source may be seen at ANNEX-A-5, 6

@: OER in Pakistan including Public, Private & Other Public sector is increasing during 2004-05 as compared to 2003-04.

Public and Private Sector

Comparison of Overall Enrolment Ratio in Pakistan (including Public and Private Sector) from Primary to High Level for the years 2003-04 & 2004-05.

OVERALL ENROLMENT RATIO BY STAGE IN PAKISTAN

Overall ER	2003-04			2004-05		
	Male	Female	Total	Male	Female	Total
Pakistan	68.35	50.11	59.57	70.42	53.74	62.38

Source may be seen at ANNEX-A-5, 6

@: OER at Public and Private Sector (including primary, middle & high level) is also increasing in 2004-05 as compared to 2003-04.

Comparison of Overall Enrolment Ratio in Pakistan by Province and Regions (including Public and Private Sector) from Primary to High Level for the years 2003-04 & 2004-05.

OER (UP TO SECONDARY) BY PROVINCE AND REGIONS IN PAKISTAN

Province/Regions	OER					
	2003-04			2004-05		
	Male	Female	Total	Male	Female	Total
Pakistan	68.35	50.11	59.57	70.42	53.74	62.38
Punjab	64.82	52.95	59.09	66.96	57.23	62.26
Sindh	67.47	49.85	59.09	69.79	53.02	61.79
NWFP	82.11	41.58	62.29	84.93	45.52	65.67
Balochistan	41.25	27.32	34.65	42.71	27.81	35.63
FATA	63.86	21.05	43.56	66.70	21.04	44.96
ICT	97.98	100.64	99.25	99.93	96.15	98.11

Source may be seen at ANNEX-A-5, 6

@: There is an increase in OER at National as well as Provincial/Regional level but in ICT, OER is decreasing during 2004-05 as compared to 2003-04.

3.2 Gross Enrolment Ratio (GER)

The Gross Enrolment Ratio is calculated by dividing the total number of pupils enrolled in a given level of education, regardless of age e.g. Primary level enrolment regardless of age, by the population of age group corresponding to the official age of that level i.e. (5-9) years age group and result is expressed in a percentage form. It is also called participation rate.

The GER at primary level is expressed as:

$$\text{GER} = \frac{\text{Total enrolment at primary level regardless of age in year } t}{\text{Total population of age group (5 - 9) in year } t} \times 100$$

Similarly GER at other levels (middle, high and higher secondary) can be calculated.

Public, Private and Other Public Sector

Comparison of Gross Enrolment Ratio in Pakistan by stage (including Public, Other Public and Private Sector) up-to-Secondary level for the years 2003-04 & 2004-05.

GROSS ENROLMENT RATIO BY STAGE IN PAKISTAN

Stage	GER					
	2003-04			2004-05		
	Male	Female	Total	Male	Female	Total
Primary	97.47	71.70	85.02	99.88	76.72	88.68
Middle	46.13	33.64	40.14	48.42	36.15	42.51
Secondary/High	29.64	21.04	25.53	30.80	22.54	26.85
TOTAL	69.39	51.01	60.54	71.95	54.91	63.73

Source may be seen at ANNEX-A-5,6

@: It is observed that GER is increasing at all stages (including Public, Private and Other Public Sector) in Pakistan in 2004-05 as compared to 2003-04

Public and Private Sector

Comparison of Gross Enrolment Ratio in Pakistan by stage (including Public and Private Sector) up-to-Secondary level for the years 2003-04 & 2004-05.

GROSS ENROLMENT RATIO BY STAGE IN PAKISTAN

Stage	GER					
	2003-04			2004-05		
	Male	Female	Total	Male	Female	Total
Primary	96.11	70.51	83.74	97.61	75.03	86.69
Middle	45.39	33.06	39.48	47.65	35.56	41.83
Secondary/High	28.98	20.48	24.91	30.13	21.97	26.23
TOTAL	68.35	50.11	59.57	70.42	53.74	62.38

Source may be seen at ANNEX-A-1, 2

@: GER is increasing at all stages (including Public & Private Sector) in Pakistan during 2004-05 as compared to 2003-04.

Comparison of Gross Enrolment Ratio in Province/Regions including Public and Private Sector by stage (up-to-Secondary) for the years 2003-04 & 2004-05.

GROSS ENROLMENT RATIO BY STAGE IN PUNJAB

Stage	GER					
	2003-04			2004-05		
	Male	Female	Total	Male	Female	Total
Primary	89.96	73.48	81.98	91.96	79.10	85.75
Middle	44.60	36.51	40.70	46.80	39.24	43.13
Secondary/High	27.47	21.54	24.63	28.11	23.70	25.99
TOTAL	64.82	52.95	59.09	66.96	57.23	62.26

Source may be seen at ANNEX-A-1, 2

@: In Punjab, GER is increasing at all stages during 2004-05 as compared to 2003-04

GROSS ENROLMENT RATIO BY STAGE IN SINDH

Stage	GER					
	2003-04			2004-05		
	Male	Female	Total	Male	Female	Total
Primary	97.83	68.73	83.86	99.60	72.56	86.53
Middle	37.83	31.05	34.64	39.95	32.90	36.63
Secondary/High	29.47	24.62	27.20	30.45	25.00	27.90
TOTAL	67.47	49.85	59.09	69.79	53.02	61.79

Source may be seen at ANNEX-A-1, 2

@: In Sindh province GER is increasing at all stages during 2004-05 as compared to 2003-04

GROSS ENROLMENT RATIO BY STAGE IN NWFP

Stage	GER					
	2003-04			2004-05		
	Male	Female	Total	Male	Female	Total
Primary	114.81	63.01	89.56	115.00	67.47	91.87
Middle	58.25	24.51	41.70	62.70	28.19	45.79
Secondary/High	34.29	13.22	23.92	38.74	14.52	26.82
TOTAL	82.11	41.58	62.29	84.93	45.52	65.67

Source may be seen at ANNEX-A-1, 2

@: In NWFP, GER is increasing at all stages during 2004-05 as compared to 2003-04

GROSS ENROLMENT RATIO BY STAGE IN BALOCHISTAN

Stage	GER					
	2003-04			2004-05		
	Male	Female	Total	Male	Female	Total
Primary	62.66	42.51	53.00	65.10	43.08	54.49
Middle	24.45	14.40	19.74	25.09	14.83	20.26
Secondary/High	14.58	8.08	11.55	15.23	8.54	12.11
TOTAL	41.25	27.32	34.65	42.71	27.81	35.63

Source may be seen at ANNEX-A-1, 2

@: There is very low increasing at all stages in Balochistan during 2004-05 as compared to 2003-04

GROSS ENROLMENT RATIO BY STAGE IN FATA

Stage	GER					
	2003-04			2004-05		
	Male	Female	Total	Male	Female	Total
Primary	100.73	37.14	70.30	102.17	36.71	70.76
Middle	33.83	5.77	20.62	36.99	5.51	22.14
Secondary/High	16.87	2.23	10.03	18.62	2.04	10.79
TOTAL	63.86	21.05	43.56	66.70	21.04	44.96

Source may be seen at ANNEX-A-1, 2

@: In FATA, there is very low increasing in GER at all stages but decrease in the GER of Female students at all stages during 2004-05 as compared to 2003-04.

GROSS ENROLMENT RATIO BY STAGE IN ICT

Stage	GER					
	2003-04			2004-05		
	Male	Female	Total	Male	Female	Total
Primary	120.68	114.55	117.74	119.10	106.57	113.00
Middle	79.55	91.49	85.20	86.16	91.82	88.84
Secondary/High	61.58	73.71	67.31	63.43	69.67	66.38
TOTAL	97.98	100.64	99.25	99.93	96.15	98.11

Source may be seen at ANNEX-A-1, 2

@: In ICT, GER at Primary and Secondary stages is decreasing but there is low increase at Middle stage, therefore overall GER in ICT is decreasing during 2004-05 as compared to 2003-04

Note: Population data of AJK and FANA is not available therefore GER of these regions could not be calculated here.

3.3 Net Enrolment Ratio (NER)

The Net Enrolment Ratio is calculated by dividing the total number of pupils enrolled at a given level of education of official age group by the population of the same age group. It is expressed in percentage. For example, Primary level Net Enrolment Ratio is defined as the ratio of the Primary level enrolment of official age group (5-9) to the corresponding age group population.

The NER at primary level is expressed as:

$$\text{NER} = \frac{\text{Total enrolment at primary level of age group (5-9) in year } t}{\text{Total population of age group (5-9) in year } t} \times 100$$

(Assumptions: Age specific data by stage is not available, therefore it is assumed that about 22% children enrolled at each level are under and over age)

Similarly NER at other levels (pre-primary, middle, high and higher secondary) can be calculated.

Public, Private and Other Public Sector

Comparison of Net Enrolment Ratio in Pakistan by stage (including Public, Other Public and Private Sector) up-to-Secondary level for the years 2003-04 & 2004-05.

NET ENROLMENT RATIO BY STAGE IN PAKISTAN

Stage	NER					
	2003-04			2004-05		
	Male	Female	Total	Male	Female	Total
Primary	76.02	55.93	66.31	77.91	59.84	69.17
Middle	35.98	26.24	31.31	37.77	28.19	33.16
Secondary/High	23.12	16.41	19.91	24.02	17.58	20.94
TOTAL	54.12	39.79	47.22	56.12	42.83	49.71

Source may be seen at ANNEX-A-5, 6

@: NER in Pakistan is increasing at all stages during 2004-05 as compared to 2003-04.

Public and Private Sector

Comparison of Net Enrolment Ratio in Pakistan by Province/Regions (including Public and Private Sector) up-to-Secondary level for the years 2003-04 & 2004-05.

NET IN PAKISTAN (UP TO SECONDARY) BY PROVINCE AND REGIONS

Province/Regions	NER					
	2003-04			2004-05		
	Male	Female	Total	Male	Female	Total
Pakistan	54.68	40.09	47.66	56.33	42.99	49.90
Punjab	50.56	42.36	47.27	52.23	44.64	48.56
Sindh	52.63	38.88	46.09	54.43	41.36	48.20
NWFP	64.05	32.44	48.58	66.24	35.50	51.22
Balochistan	32.17	21.31	27.03	33.31	21.70	27.79
FATA	49.81	16.42	33.98	52.02	16.41	35.07
ICT	76.42	78.50	77.41	77.94	75.00	76.53

Source may be seen at ANNEX-A-1, 2

@: NER in Pakistan, Punjab, Sindh, NWFP and Balochistan is increasing at but the NER of Female and Total is decreasing in FATA & ICT during 2004-05 as compared to 2003-04.

Comparison of Net Enrolment Ratio in Pakistan by stage (including Public and Private Sector) up-to-Secondary level for the years 2003-04 & 2004-05.

NET ENROLMENT RATIO BY STAGE IN PAKISTAN

Stage	NER					
	2003-04			2004-05		
	Male	Female	Total	Male	Female	Total
Primary	74.97	55.00	65.32	76.14	58.52	67.62
Middle	35.40	25.78	30.79	37.17	27.74	32.63
Secondary/High	22.61	15.97	19.43	23.50	17.14	20.46
TOTAL	54.68	40.09	47.66	56.33	42.99	49.90

Source may be seen at ANNEX-A-1, 2

@: NER in Pakistan is increasing at all stages including Public and Private Sector during 2004-05 as compared to 2003-04

Comparison of Net Enrolment Ratio in Province/Regions by stage (including Public and Private Sector) up-to-Secondary level for the years 2003-04 & 2004-05.

NET ENROLMENT RATIO BY STAGE IN PUNJAB

Stage	NER					
	2003-04			2004-05		
	Male	Female	Total	Male	Female	Total
Primary	70.17	57.32	63.95	71.73	61.70	66.88
Middle	34.79	29.21	32.56	36.50	30.61	33.65
Secondary/High	21.42	17.23	19.70	21.93	18.49	20.27
TOTAL	50.56	42.36	47.27	52.23	44.64	48.56

Source may be seen at ANNEX-A-1, 2

@: NER in Punjab is increasing at all stages during 2004-05 as compared to 2003-04

NET ENROLMENT RATIO BY STAGE IN SINDH

Stage	NER					
	2003-04			2004-05		
	Male	Female	Total	Male	Female	Total
Primary	76.31	53.61	65.41	77.69	56.59	67.50
Middle	29.51	24.22	27.02	31.16	25.66	28.57
Secondary/High	22.99	19.21	21.21	23.75	19.50	21.76
TOTAL	52.63	38.88	46.09	54.43	41.36	48.20

Source may be seen at ANNEX-A-1, 2

@: There is low increase in NER at all stages during 2004-05 as compared to 2003-04 in Sindh.

NET ENROLMENT RATIO BY STAGE IN NWFP

Stage	NER					
	2003-04			2004-05		
	Male	Female	Total	Male	Female	Total
Primary	89.55	49.14	69.85	89.70	52.63	71.66
Middle	45.43	19.11	32.53	48.91	21.99	35.72
Secondary/High	26.74	10.31	18.66	30.22	11.33	20.92
TOTAL	64.05	32.44	48.58	66.24	35.50	51.22

Source may be seen at ANNEX-A-1, 2

@: NER in NWFP is increasing at all stages during 2004-05 as compared to 2003-04

NET ENROLMENT RATIO BY STAGE IN BALOCHISTAN

Stage	NER					
	2003-04			2004-05		
	Male	Female	Total	Male	Female	Total
Primary	48.87	33.16	41.34	50.78	33.60	42.50
Middle	19.07	11.23	15.40	19.57	11.56	15.80
Secondary/High	11.37	6.30	9.01	11.88	6.66	9.44
TOTAL	32.17	21.31	27.03	33.31	21.70	27.79

Source may be seen at ANNEX-A-1, 2

@: In Balochistan, there is low increase in NER at all stages during 2004-05 as compared to 2003-04

NET ENROLMENT RATIO BY STAGE IN FATA

Stage	NER					
	2003-04			2004-05		
	Male	Female	Total	Male	Female	Total
Primary	78.57	28.97	54.83	79.69	28.64	55.19
Middle	26.39	4.50	16.08	28.85	4.30	17.27
Secondary/High	13.16	1.74	7.82	14.52	1.59	8.42
TOTAL	49.81	16.42	33.98	52.02	16.41	35.07

Source may be seen at ANNEX-A-1, 2

@: NER in FATA is increasing at all stages but the Female NER is decreasing at all stages during 2004-05 as compared to 2003-04

NET ENROLMENT RATIO BY STAGE IN ICT

Stage	NER					
	2003-04			2004-05		
	Male	Female	Total	Male	Female	Total
Primary	94.13	89.35	91.83	92.89	83.13	88.14
Middle	62.05	71.36	66.45	67.21	71.62	69.29
Secondary/High	48.03	57.49	52.50	49.47	54.35	51.77
TOTAL	76.42	78.50	77.41	77.94	75.00	76.53

Source may be seen at ANNEX-A-1, 2

@: In ICT, NER at Primary and Secondary stages is decreasing but there is low increase at Middle stage, therefore overall NER in ICT is decreasing during 2004-05 as compared to 2003-04

Note: Population data of AJK and FANA is not available therefore NER of these Regions could not be calculated here.

3.4 Gender Parity Index (GPI)

Gender Parity Index is the ratio of the female students to male students. It indicates the development of girls' enrolment in comparison with boys. A GPI between 0 and 1 means a disparity in favour of boys/men; a GPI of 1 indicates parity between sexes; a GPI greater than 1 indicates a disparity in favour of girls/women.

In our country the opportunities of getting education for males and females are not equal, therefore the best measure of GPI can be obtained by using ratios instead of using actual figures.

$$GPI = \frac{GER \text{ (female students)}}{GER \text{ (male students)}}$$

Public, Private and Other Public Sector

Comparison of Gender Parity Index in Pakistan by stage (including Public, Other Public and Private Sector) up to Secondary Level for the years 2003-04 & 2004-05.

GENDER PARITY INDEX BY STAGE IN PAKISTAN

Stage	2003-04			2004-05		
	GER		GPI	GER		GPI
	Male	Female		Male	Female	
Primary	97.47	71.70	0.74	99.88	76.72	0.77
Middle	46.13	33.64	0.73	48.42	36.15	0.75
Secondary/High	29.64	21.04	0.71	30.80	22.54	0.73
TOTAL	69.39	51.01	0.74	71.95	54.91	0.76

Source: Pakistan Education Statistics 2003-04 & 2004-05

@: GPI in Pakistan is increasing at all stages during 2004-05 as compared to 2003-04 including Public, Private and Other Public Sector but disparity is in favour of boys in Pakistan.

Public and Private Sector

Comparison of GPI in Pakistan by Province/Regions (Public and Private Sector) for the years 2003-04 & 2004-05 up-to-Secondary level.

OVERALL GENDER PARITY INDEX GPI IN PAKISTAN (UP TO SECONDARY) BY PROVINCE AND REGIONS

Province/Regions	2003-04			2004-05		
	GER		GPI	GER		GPI
	Male	Female		Male	Female	
Pakistan	91.38	69.09	0.76	70.42	53.74	0.76
Punjab	64.82	52.95	0.82	66.96	57.23	0.85
Sindh	67.47	49.85	0.74	69.79	53.02	0.76
NWFP	82.11	41.58	0.51	84.93	45.52	0.54
Balochistan	41.25	27.32	0.66	42.71	27.81	0.65
FATA	63.86	21.05	0.33	66.70	21.04	0.32
ICT	97.98	100.64	1.03	99.93	96.15	0.96

Source: Pakistan Education Statistics 2003-04 & 2004-05

@: GPI is increasing in Punjab, Sindh and NWFP but decreasing in Balochistan, FATA and ICT during 2004-05 as compared to 2003-04. GPI at National Level including Public & Private Sector is same in both the years.

Comparison of GPI in Pakistan by stage (Public and Private Sector) up-to-Secondary level for the years 2003-04 & 2004-05.

GENDER PARITY INDEX BY STAGE IN PAKISTAN

Stage	2003-04			2004-05		
	GER		GPI	GER		GPI
	Male	Female		Male	Female	
Primary	131.44	98.64	0.75	97.61	75.03	0.77
Middle	57.47	44.02	0.77	47.65	35.56	0.75
Secondary/High	35.75	26.70	0.75	30.13	21.97	0.73
TOTAL	91.38	69.09	0.76	70.42	53.74	0.76

Source: Pakistan Education Statistics 2003-04 & 2004-05

@: GPI in Pakistan is increasing at Primary level but decreasing at Middle and High level during 2004-05 as compared to 2003-04.

Comparison of GPI in Province and Regions by stage (Public and Private Sector) for the years 2003-04 & 2004-05 up-to-Secondary level

GENDER PARITY INDEX BY STAGE IN PUNJAB

Stage	2003-04			2004-05		
	GER		GPI	GER		GPI
	Male	Female		Male	Female	
Primary	89.96	73.48	0.82	91.96	79.10	0.86
Middle	44.60	36.51	0.82	46.80	39.24	0.84
Secondary/High	27.47	21.54	0.78	28.11	23.70	0.84
TOTAL	64.82	52.95	0.82	66.96	57.23	0.85

Source: Pakistan Education Statistics 2003-04 & 2004-05

@: GPI in Punjab is increasing at all stages during 2004-05 as compared to 2003-04.

GENDER PARITY INDEX BY STAGE IN SINDH

Stage	2003-04			2004-05		
	GER		GPI	GER		GPI
	Male	Female		Male	Female	
Primary	97.83	68.73	0.70	99.60	72.56	0.73
Middle	37.83	31.05	0.82	39.95	32.90	0.82
Secondary/High	29.47	24.62	0.84	30.45	25.00	0.82
TOTAL	67.47	49.85	0.74	69.79	53.02	0.76

Source: Pakistan Education Statistics 2003-04 & 2004-05

@: There is an increase in GPI at Primary stage decrease at High stage and no change at Middle stage in Sindh during 2004-05 as compared to 2003-04.

GENDER PARITY INDEX BY STAGE IN NWFP

Stage	2003-04		GPI	2004-05		GPI
	GER			GER		
	Male	Female		Male	Female	
Primary	114.81	63.01	0.55	115.00	67.47	0.59
Middle	58.25	24.51	0.42	62.70	28.19	0.45
Secondary/High	34.29	13.22	0.39	38.74	14.52	0.37
TOTAL	82.11	41.58	0.51	84.93	45.52	0.54

Source: Pakistan Education Statistics 2003-04 & 2004-05

@: GPI in NWFP is increasing at all stages except at High level during 2004-05 as compared to 2003-04.

GENDER PARITY INDEX BY STAGE IN BALOCHISTAN

Stage	2003-04		GPI	2004-05		GPI
	GER			GER		
	Male	Female		Male	Female	
Primary	62.66	42.51	0.68	65.10	43.08	0.66
Middle	24.45	14.40	0.59	25.09	14.83	0.59
Secondary/High	14.58	8.08	0.55	15.23	8.54	0.56
TOTAL	41.25	27.32	0.66	42.71	27.81	0.65

Source: Pakistan Education Statistics 2003-04 & 2004-05

@: GPI in Balochistan is decreasing at Primary stage, same at Middle stage and increasing at High stage during 2004-05 as compared to 2003-04.

GENDER PARITY INDEX BY STAGE IN FATA

Stage	2003-04		GPI	2004-05		GPI
	GER			GER		
	Male	Female		Male	Female	
Primary	100.73	37.14	0.37	102.17	36.71	0.36
Middle	33.83	5.77	0.17	36.99	5.51	0.15
Secondary/High	16.87	2.23	0.13	18.62	2.04	0.11
TOTAL	63.86	21.05	0.33	66.70	21.04	0.32

Source: Pakistan Education Statistics 2003-04 & 2004-05

@: GPI in FATA is decreasing at all stages during 2004-05 as compared to 2003-04.

GENDER PARITY INDEX BY STAGE IN ICT

Stage	2003-04		GPI	2004-05		GPI
	GER			GER		
	Male	Female		Male	Female	
Primary	120.68	114.55	0.95	119.10	106.57	0.89
Middle	79.55	91.49	1.15	86.16	91.82	1.07
Secondary/High	61.58	73.71	1.20	63.43	69.67	1.10
TOTAL	97.98	100.64	1.03	99.93	96.15	0.96

Source: Pakistan Education Statistics 2003-04 & 2004-05

@: GPI in ICT is decreasing at all stages during 2004-05 as compared to 2003-04 but disparity is in favour of girls at Middle and High stages.

3.5 Sex Ratio

It is the principal measure of sex composition, which is the number of males per hundred females. It indicates the development of girls' enrolment in comparison with boys.

$$\text{Sex Ratio} = \frac{\text{Male students}}{\text{Female students}} \times 100$$

Public, Private and Other Public Sector

Comparison of Sex Ratio in Pakistan by stage (including Public, Private and Other Public Sector) up-to-Secondary level for the years 2003-04 & 2004-05.

SEX RATIO IN PAKISTAN BY STAGE

Stage	2003-04		Sex Ratio	2004-05		Sex Ratio
	Enrolment			Enrolment		
	Male	Female		Male	Female	
Primary	9,601,462	6,605,824	145	10,039,441	7,218,507	139
Middle	2,584,043	1,737,218	149	2,687,851	1,862,622	144
Secondary/High	1,090,599	708,991	154	1,123,720	756,302	149
TOTAL	13,276,104	9,052,033	147	13,851,012	9,837,430	141

Source: Pakistan Education Statistics 2003-04 & 2004-05

Sex ratio is showing the number of male enrolment for every 100 female students up to high level

@: Sex Ratio in Pakistan (Including Public, Other Public & Private Sector) is decreasing at all stages during 2004-05 as compared to 2003-04.

Public and Private Sector

Comparison of Sex Ratio in Pakistan by Province/Regions (including Public and Private Sector only) up-to-Secondary level for the years 2003-04 & 2004-05.

SEX RATIO IN PAKISTAN (UP TO HIGHER-SEC) BY PROVINCE AND REGIONS

Province/Regions	2003-04		Sex Ratio	2004-05		Sex Ratio
	Enrolment			Enrolment		
	Male	Female		Male	Female	
Pakistan	13,077,139	8,892,815	147	13,555,762	9,628,951	141
Punjab	6,853,268	5,221,167	131	7,135,023	5,704,953	125
Sindh	2,873,669	1,924,650	149	3,005,695	2,082,137	144
NWFP	2,189,062	1,061,623	206	2,262,481	1,158,850	195
Balochistan	431,842	257,069	168	443,715	261,734	170
AJK	247,959	199,506	124	213,764	188,293	114
FANA	71,044	43,026	165	69,349	47,750	145
FATA	310,356	92,178	337	320,812	91,965	349
ICT	99,939	93,595	107	104,922	93,269	112

Source: Pakistan Education Statistics 2003-04 & 2004-05

@: Sex Ratio in Pakistan is increasing in Balochistan, FATA and ICT and decreasing in other Province/ Regions during 2004-05 as compared to 2003-04.

Comparison of Sex Ratio in Pakistan by stage (including Public and Private Sector) for the years 2003-04 & 2004-05

SEX RATIO BY STAGE IN PAKISTAN

Stage	2003-04		Sex Ratio	2004-05		Sex Ratio
	Enrolment			Enrolment		
	Male	Female		Male	Female	
Primary	9,467,925	6,495,988	146	9,811,053	7,059,459	139
Middle	2,542,696	1,706,997	149	2,645,212	1,832,396	144
Secondary/High	1,066,518	689,829	155	1,099,497	737,097	149
TOTAL	13,077,139	8,892,815	147	13,555,762	9,628,951	141

Source: Pakistan Education Statistics 2003-04 & 2004-05

@: In Pakistan the Sex Ratio is decreasing at all stages during 2004-05 as compared to 2003-04

Comparison of Sex Ratio in Province & Regions (including Public and Private Sector) by Stage for the years 2003-04 & 2004-05

SEX RATIO BY STAGE IN PUNJAB

Stage	2003-04		Sex Ratio	2004-05		Sex Ratio
	Enrolment			Enrolment		
	Male	Female		Male	Female	
Primary	4,924,144	3,774,135	130	5,136,817	4,131,456	124
Middle	1,375,954	1,047,396	131	1,435,383	1,132,853	127
Secondary/High	553,170	399,636	138	562,824	440,644	128
TOTAL	6,853,268	5,221,167	131	7,135,023	5,704,953	125

Source: Pakistan Education Statistics 2003-04 & 2004-05

@: Sex Ratio is also decreasing at all stages in Punjab during 2004-05 as compared to 2003-04

SEX RATIO BY STAGE IN SINDH

Stage	2003-04		Sex Ratio	2004-05		Sex Ratio
	Enrolment			Enrolment		
	Male	Female		Male	Female	
Primary	2,168,898	1,407,680	154	2,272,867	1,547,601	147
Middle	466,079	340,659	137	488,928	358,291	136
Secondary/High	238,693	176,311	135	243,900	176,246	138
TOTAL	2,873,669	1,924,650	149	3,005,695	2,082,137	144

Source: Pakistan Education Statistics 2003-04 & 2004-05

@: Sex Ratio in Sindh is increasing at High-stage and decreasing at all other stages during 2004-05 as compared to 2003-04

SEX RATIO BY STAGE IN NWFP

Stage	2003-04		Sex Ratio	2004-05		Sex Ratio
	Enrolment			Enrolment		
	Male	Female		Male	Female	
Primary	1,547,622	807,738	192	1,575,440	875,752	180
Middle	460,750	186,488	247	485,960	210,052	231
Secondary/High	180,690	67,398	268	201,081	73,047	275
TOTAL	2,189,062	1,061,623	206	2,262,481	1,158,850	195

Source: Pakistan Education Statistics 2003-04 & 2004-05

@: In NWFP, Sex Ratio is increasing at High-stage and decreasing at all other stages during 2004-05 as compared to 2003-04

SEX RATIO BY STAGE IN BALOCHISTAN

Stage	2003-04		Sex Ratio	2004-05		Sex Ratio
	Enrolment			Enrolment		
	Male	Female		Male	Female	
Primary	322,690	201,510	160	332,007	204,188	163
Middle	78,244	40,613	193	79,278	41,663	190
Secondary/High	30,908	14,946	207	32,430	15,883	204
TOTAL	431,842	257,069	168	443,715	261,734	170

Source: Pakistan Education Statistics 2003-04 & 2004-05

@: Sex Ratio in Balochistan is decreasing at Middle & High stages but overall Sex ratio and Primary stage Sex ratio in Balochistan is increasing during 2004-05 as compared to 2003-04

SEX RATIO BY STAGE IN AJK

Stage	2003-04		Sex Ratio	2004-05		Sex Ratio
	Enrolment			Enrolment		
	Male	Female		Male	Female	
Primary	146,996	130,705	112	127,462	123,221	103
Middle	72,390	53,387	136	62,750	50,219	125
Secondary/High	28,573	15,414	185	23,552	14,853	159
TOTAL	247,959	199,506	124	213,764	188,293	114

Source: Pakistan Education Statistics 2003-04 & 2004-05

@: Sex Ratio in AJK is decreasing at all stages during 2004-05 as compared to 2003-04

SEX RATIO BY STAGE IN FANA

Stage	2003-04		Sex Ratio	2004-05		Sex Ratio
	Enrolment			Enrolment		
	Male	Female		Male	Female	
Primary	47,641	34,122	140	47,238	36,348	130
Middle	17,154	7,228	237	16,140	8,558	189
Secondary/High	6,249	1,676	373	5,971	2,844	210
TOTAL	71,044	43,026	165	69,349	47,750	145

Source: Pakistan Education Statistics 2003-04 & 2004-05

@: Sex Ratio in FANA is decreasing at all stages during 2004-05 as compared to 2003-04

SEX RATIO BY STAGE IN FATA

Stage	2003-04		Sex Ratio	2004-05		Sex Ratio
	Enrolment			Enrolment		
	Male	Female		Male	Female	
Primary	244,766	82,821	296	251,337	83,343	302
Middle	49,055	7,439	659	51,787	6,886	752
Secondary/High	16,535	1,918	862	17,687	1,736	1019
TOTAL	310,356	92,178	337	320,812	91,965	349

Source: Pakistan Education Statistics 2003-04 & 2004-05

@: Sex Ratio in FATA is increasing and increase is very high at all stages during 2004-05 as compared to 2003-04

SEX RATIO BY STAGE IN ICT

Stage	2003-04		Sex Ratio	2004-05		Sex Ratio
	Enrolment			Enrolment		
	Male	Female		Male	Female	
Primary	65,169	57,277	114	67,885	57,550	118
Middle	23,070	23,788	97	24,987	23,874	105
Secondary/High	11,700	12,530	93	12,051	11,845	102
TOTAL	99,939	93,595	107	104,922	93,269	112

Source: Pakistan Education Statistics 2003-04 & 2004-05

@: Sex Ratio in ICT is also increasing at all stages during 2004-05 as compared to 2003-04

3.6 Pupil Teacher Ratio (PTR)

It is an indicator used to measure the average workload of teachers at particular level of education. It computes the average number of pupils per teacher at a particular level of education. It is also known as Student Teacher Ratio.

$$\text{Pupil-teacher ratio} = \frac{\text{Total number of Students at a particular level}}{\text{Total number of teachers at that level}}$$

3.7 Teacher School Ratio

Average number of teachers per school at particular level of education in a given year.

$$\text{Teacher per School Ratio} = \frac{\text{Total number of Teachers at a particular level}}{\text{Total number of Schools at that level}}$$

3.8 Student School Ratio

Average number of students per school at a particular level of education in a given year.

$$\text{Students per School Ratio} = \frac{\text{Total number of students at a particular level}}{\text{Total schools at that level}}$$

Student Teacher (pupil teacher), Student School and Teacher School Ratios in Pakistan (Including Public Sector only from Primary to secondary level) by Province/Regions for the years 2003-04 & 2004-05

STUDENT TEACHER, STUDENT SCHOOL AND TEACHER SCHOOL RATIO IN PAKISTAN

S.No	Province	Ratios 2003-04			Ratios 2004-05		
		Students per Teacher	Students per School	Teacher per School	Students per Teacher	Students per School	Teacher per School
	Pakistan	29	118	4	30	124	4
1	Punjab	31	156	5	34	172	5
2	Sindh	25	77	3	27	80	3
3	NWFP	33	129	4	31	126	4
4	Balochistan	20	77	4	21	74	3
5	AJK	23	105	5	21	97	5
6	FANA	30	93	3	28	93	3
7	FATA	27	103	4	26	103	4
8	ICT	31	390	13	32	394	12

Source: District Education Fact Files, 2003-04 & 2004-05

@: PTR in NWFP, AJK an FATA is decreasing. Student/Sch ratio is decreasing in NWFP, Balochistan, AJK is decreasing, no change in FATA & FANA. Teacher/Sch ratio in Balochistan & ICT is decreasing and no change in other areas during 2004-05 as compared to 2003-04.

Comparison of Student Teacher Ratio, Student School Ratio and Teacher School Ratio in Pakistan by level for the years 2003-04 & 2004-05.

STUDENT TEACHER, STUDENT SCHOOL & TEACHER SCHOOL RATIO BY LEVEL IN PAKISTAN

S.No	Level	Ratios 2003-04			Ratios 2004-05		
		Students per Teacher	Students per School	Teacher per School	Students per Teacher	Students per School	Teacher per School
	Pakistan	29	118	4	30	124	4
1	Primary	33	86	3	34	90	3
2	Middle	22	177	8	24	186	8
3	High	26	475	18	27	484	18

Source: District Education Fact Files, 2003-04 & 2004-05

@: PTR and Student/Sch ratios are increasing at all stages in Pakistan but there is no change in Teacher/Sch ratio during 2004-05 as compared to 2003-04.

Comparison of Student Teacher Ratio, Student School Ratio and Teacher School Ratio in Province and Regions by level for the years 2003-04 & 2004-05.

STUDENT TEACHER, STUDENT SCHOOL AND TEACHER SCHOOL RATIO BY LEVEL IN PUNJAB

S.No	Level	Ratios 2003-04			Ratios 2004-05		
		Students per Teacher	Students per School	Teacher per School	Students per Teacher	Students per School	Teacher per School
Punjab		31	156	5	34	172	5
1	Primary	34	97	3	37	110	3
2	Middle	25	247	10	30	272	9
3	High	31	597	19	34	627	19

Source: District Education Fact Files, 2003-04 & 2004-05

STUDENT TEACHER, STUDENT SCHOOL AND TEACHER SCHOOL RATIO BY LEVEL IN SINDH

S.No	Level	Ratios 2003-04			Ratios 2004-05		
		Students per Teacher	Students per School	Teacher per School	Students per Teacher	Students per School	Teacher per School
SINDH		25	77	3	27	80	3
1	Primary	28	67	2	30	71	2
2	Middle	17	67	4	17	67	4
3	High	19	361	19	19	343	18

Source: District Education Fact Files, 2003-04 & 2004-05

STUDENT TEACHER, STUDENT SCHOOL AND TEACHER SCHOOL RATIO BY LEVEL IN NWFP

S.No	Level	Ratios 2003-04			Ratios 2004-05		
		Students per Teacher	Students per School	Teacher per School	Students per Teacher	Students per School	Teacher per School
NWFP		33	129	4	31	126	4
1	Primary	40	120	3	37	116	3
2	Middle	14	85	6	14	84	6
3	High	23	330	14	24	348	15

Source: District Education Fact Files, 2003-04 & 2004-05

STUDENT TEACHER, STUDENT SCHOOL AND TEACHER SCHOOL RATIO BY LEVEL IN BALOCHISTAN

S.No	Level	Ratios 2003-04			Ratios 2004-05		
		Students per Teacher	Students per School	Teacher per School	Students per Teacher	Students per School	Teacher per School
Balochistan		20	77	4	21	74	3
1	Primary	25	48	2	28	47	2
2	Middle	13	150	12	14	154	11
3	High	19	450	24	18	433	24

Source: District Education Fact Files, 2003-04 & 2004-05

STUDENT TEACHER, STUDENT SCHOOL AND TEACHER SCHOOL RATIO BY LEVEL IN AJK

S.No	Level	Ratios 2003-04			Ratios 2004-05		
		Students per Teacher	Students per School	Teacher per School	Students per Teacher	Students per School	Teacher per School
AJK		23	105	5	21	97	5
1	Primary	37	53	1	34	48	1
2	Middle	22	149	7	20	133	7
3	High	18	308	18	16	262	17

Source: District Education Fact Files, 2003-04 & 2004-05

STUDENT TEACHER, STUDENT SCHOOL AND TEACHER SCHOOL RATIO BY LEVEL IN FANA

S.No	Level	Ratios 2003-04			Ratios 2004-05		
		Students per Teacher	Students per School	Teacher per School	Students per Teacher	Students per School	Teacher per School
FANA		30	93	3	28	93	3
1	Primary	36	66	2	34	66	2
2	Middle	28	134	5	25	131	5
3	High	22	268	12	21	268	13

Source: District Education Fact Files, 2003-04 & 2004-05

STUDENT TEACHER, STUDENT SCHOOL AND TEACHER SCHOOL RATIO BY LEVEL IN FATA

S.No	Level	Ratios 2003-04			Ratios 2004-05		
		Students per Teacher	Students per School	Teacher per School	Students per Teacher	Students per School	Teacher per School
FATA		27	103	4	26	103	4
1	Primary	31	81	3	31	80	3
2	Middle	18	161	9	18	169	9
3	High	22	372	17	22	394	18

Source: District Education Fact Files, 2003-04 & 2004-05

STUDENT TEACHER, STUDENT SCHOOL AND TEACHER SCHOOL RATIO BY LEVEL IN ICT

S.No	Level	Ratios 2003-04			Ratios 2004-05		
		Students per Teacher	Students per School	Teacher per School	Students per Teacher	Students per School	Teacher per School
ICT		31	390	13	32	394	12
1	Primary	42	370	9	43	373	9
2	Middle	64	745	12	67	772	12
3	High	11	232	22	11	223	21

Source: District Education Fact Files, 2003-04 & 2004-05

@: PTR is increasing in Punjab, Sindh, and Balochistan & ICT. It is decreasing in NWFP, AJK, FANA & FATA during the year 2004-05 as compared to 2003-04.

@Student/School ratio is increasing in Punjab, Sindh & ICT. It is decreasing in NWFP, Balochistan, AJK and it is same in FANA & FATA during the year 2004-05 as compared to 2003-04.

@Teacher/School ratio is decreasing in ICT & Balochistan and there is no change in all other areas during 2004-05 as compared to 2003-04.

3.9 Percentage of Female Students

Participation of Female Students Enrolled in Public, Other Public and Private Sector up-to-higher secondary level in Pakistan as a % of total enrolment for the years 2003-04 & 2004-05.

$$\% \text{ of Female Students} = \frac{\text{Female Enrolment at specific level in year-t}}{\text{Total Enrolment at specific level in year-t}} \times 100$$

Public, Private and Other Public Sector

% Of Female Students Enrolled in Pakistan (including Public, Private and Other Public Sector) by Province/Regions for the years 2003-04 & 2004-05

% OF FEMALE STUDENTS BY STAGE IN PAKISTAN

Stage	2003-04		%Female Students	2004-05		%Female Students
	Enrolment			Enrolment		
	Female	Total		Female	Total	
Pre-Primary	1573391	3573929	44	1873178	4075258	46
Primary	6605824	16207286	41	7218507	17257948	42
Middle	1737218	4321261	40	1862622	4550473	41
High/ 'O' Level	708991	1799590	39	756302	1880021	40
Higher Sec./ 'A' Level	93067	197517	47	102851	222238	46
TOTAL	10718491	26099583	41	11813459	27985938	42

Source: Pakistan Education Statistics 2003-04 & 2004-05

@: In Pakistan, there is very low increase in the % of female students at all stages except the Higher-Secondary/ A-level during 2004-05 as compared to 2003-04.

Public Sector Only

Comparison of % of Female Students Enrolled in Pakistan (Public Sector only) by Province/Regions for the years 2003-04 & 2004-05

% OF FEMALE STUDENTS BY PROVINCE/REGIONS IN PAKISTAN

Stage	2003-04		%Female Students	2004-05		%Female Students
	Enrolment			Enrolment		
	Female	Total		Female	Total	
PAKISTAN	7,292,071	18,188,073	40	7841264	18642542	42
PUNJAB	3980247	9294824	43	4596562	10340168	44
SIND	1333603	3515244	38	1474001	3760647	39
NWFP	1117094	3195790	35	1191708	3171584	38
BALOCHISTAN	315671	813763	39	326545	844012	39
AJK	255,657	567,768	45	252448	526131	48
FATA	150620	496076	30	149843	508931	29
FANA	57,074	147,179	39	61655	148824	41
ICT	82105	157429	52	77895	154231	51

Source: Pakistan Education Statistics 2003-04 & 2004-05

@: % of Female Students is same in Balochistan, it is decreasing in FATA & ICT, and it is increasing in other areas during 2004-05 as compared to 2003-04.

Comparison of % of Female Students Enrolled in Pakistan (Public Sector only) by stage for the years 2003-04 & 2004-05

% OF FEMALE STUDENTS (PUBLIC SECTOR ONLY) BY STAGE IN PAKISTAN

Stage	2003-04		%Female Students	2004-05		%Female Students
	Enrolment			Enrolment		
	Female	Total		Female	Total	
PAKISTAN	7,292,071	18,188,073	40	8126854	19445061	42
Pre-Primary	1,556,284	3,531,907	44	1860754	4046075	46
Primary	4,013,982	10,135,577	40	4428532	10692475	41
Middle	1,171,104	3,078,217	38	1250952	3206557	39
High/ 'O' Level	499,192	1,340,680	37	530255	1385594	38
Higher Sec./ 'A' Level	51,509	101,692	51	56361	114360	49

Source: Pakistan Education Statistics 2003-04 & 2004-05

@: % of Female Students is increasing at all stages except Higher-Secondary/A-level in Pakistan during 2004-05 as compared to 2003-04.

Percentage of Female Students Enrolled (Public Sector only) in Pakistan by Province/Regions

% OF FEMALE STUDENTS (PUBLIC SECTOR ONLY) BY STAGE IN PUNJAB

Stage	2003-04		%Female Students	2004-05		%Female Students
	Enrolment			Enrolment		
	Female	Total		Female	Total	
PUNJAB	3980247	9294824	43	4596562	10340168	44
Pre-Primary	879094	1812958	48	1148175	2388158	48
Primary	2089986	4968441	42	2346258	5314644	44
Middle	693522	1724429	40	748899	1809906	41
High/ 'O' Level	293636	748124	39	325634	781388	42
Higher Sec./ 'A' Level	24009	40872	59	27596	46072	60

% OF FEMALE STUDENTS (PUBLIC SECTOR ONLY) BY STAGE IN SINDH

Stage	2003-04		%Female Students	2004-05		%Female Students
	Enrolment			Enrolment		
	Female	Total		Female	Total	
SIND	1333603	3515244	38	1474001	3760647	39
Pre-Primary	149422	356282	42	179346	413373	43
Primary	869103	2383466	36	976709	2555769	38
Middle	199165	489606	41	204770	503131	41
High/ 'O' Level	106173	259951	41	100146	251914	40
Higher Sec./ 'A' Level	9740	25939	38	13030	36460	36

% OF FEMALE STUDENTS (PUBLIC SECTOR ONLY) BY STAGE IN NWFP

Stage	2003-04		%Female Students	2004-05		%Female Students
	Enrolment			Enrolment		
	Female	Total		Female	Total	
NWFP	1117094	3195790	35	1191708	3171584	38
Pre-Primary	294902	774315	38	288414	634438	45
Primary	603265	1669687	36	659011	1724380	38
Middle	154016	526821	29	174820	565359	31
High/ 'O' Level	55980	204058	27	60658	226355	27
Higher Sec./ 'A' Level	8931	20909	43	8805	21052	42

% OF FEMALE STUDENTS (PUBLIC SECTOR ONLY) BY STAGE IN BALOCHISTAN

Stage	2003-04		%Female Students	2004-05		%Female Students
	Enrolment			Enrolment		
	Female	Total		Female	Total	
BALOCHISTAN	315671	813763	39	326545	844012	39
Pre-Primary	96876	247521	39	101748	259767	39
Primary	170041	427231	40	170831	433408	39
Middle	35594	100263	36	36218	100767	36
High/ 'O' Level	13160	38748	34	13945	40603	34
Higher Sec./ 'A' Level	0	0		3803	9467	40

% OF FEMALE STUDENTS (PUBLIC SECTOR ONLY) BY STAGE IN AJK

Stage	2003-04		%Female Students	2004-05		%Female Students
	Enrolment			Enrolment		
	Female	Total		Female	Total	
AJK	255,657	567,768	45	252448	526131	48
Pre-Primary	55,161	118,907	46	62437	121707	51
Primary	130,705	277,701	47	123221	250683	49
Middle	53,387	125,777	42	50219	112969	44
High/ 'O' Level	15,414	43,987	35	14853	38405	39
Higher Sec./ 'A' Level	990	1,396	71	1718	2367	73

% OF FEMALE STUDENTS (PUBLIC SECTOR ONLY) BY STAGE IN FATA

Stage	2003-04		%Female Students	2004-05		%Female Students
	Enrolment			Enrolment		
	Female	Total		Female	Total	
FATA	150620	496076	30	149843	508931	29
Pre-Primary	63905	183440	35	63668	191331	33
Primary	77748	249601	31	77965	252015	31
Middle	7186	46684	15	6612	48030	14
High/ 'O' Level	1781	16117	11	1587	16888	9
Higher Sec./ 'A' Level	0	234	0	11	667	2

% OF FEMALE STUDENTS (PUBLIC SECTOR ONLY) BY STAGE IN FANA

Stage	2003-04		%Female Students	2004-05		%Female Students
	Enrolment			Enrolment		
	Female	Total		Female	Total	
FANA	57,074	147,179	39	61655	148824	41
Pre-Primary	14,048	33,095	42	13905	31725	44
Primary	34,122	81,763	42	36348	83586	43
Middle	7,228	24,382	30	8558	24698	35
High/ 'O' Level	1,676	7,925	21	2844	8815	32
Higher Sec./ 'A' Level	0	14	0	0	0	0

% OF FEMALE STUDENTS (PUBLIC SECTOR ONLY) BY STAGE IN ICT

Stage	2003-04		%Female Students	2004-05		%Female Students
	Enrolment			Enrolment		
	Female	Total		Female	Total	
ICT	82105	157429	52	77895	154231	51
Pre-Primary	2876	5389	53	3061	5576	55
Primary	39012	77687	50	38189	77990	49
Middle	21006	40255	52	20856	41697	50
High/ 'O' Level	11372	21770	52	10588	21226	50
Higher Sec./ 'A' Level	7839	12328	64	5201	7742	67

Source: Pakistan Education Statistics 2003-04 & 2004-05

@: % of Female Students is increasing in Punjab, Sindh, NWFP, AJK & FANA but it is decreasing in Balochistan, FATA & ICT during 2004-05 as compared to 2003-04.

3.10 Percentage of Female Teachers

Participation of Female Teachers as % of Total Teachers (Public, Other Public & Private Sector) in Pakistan by stage up-to-higher secondary level for the years 2003-04 & 2004-05.

$$\% \text{ of Female Teachers} = \frac{\text{Female Teachers at specific level in year - t}}{\text{Total Teachers at specific level in year - t}} \times 100$$

Public, Private and Other Public Sector

Comparison of % of Female Teachers in Pakistan (including Public, Private and Other Public Sector) by stage for the years 2003-04 & 2004-05

% OF FEMALE TEACHERS BY STAGE IN PAKISTAN

Stage	2003-04		% Female Teachers	2004-05		% Female Teachers
	Teachers			Teachers		
	Female	Total		Female	Total	
Pakistan	493580	989503	50	514,826	1,021,869	50
Primary*	195329	432222	45	206,512	450,136	46
Middle	146580	239351	61	151,457	246,666	61
High	134238	276916	48	138,606	282,113	49
Higher Sec.	17433	41014	43	18,251	42,954	42

(*:Including Mosque Schools)

Source: Pakistan Education Statistics 2003-04 & 2004-05

@: % of Female Teachers is same in Pakistan at Middle stage for 2003-04 and 2004-05. It is increasing at Primary & High stage but decreasing at Higher-Secondary stage during 2004-05 as compared to 2003-04.

Public Sector Only

Participation of Female Teachers as % of Total Teachers (Public Sector Only) in Pakistan by Province/Regions up-to-higher secondary level for the years 2003-04 & 2004-05.

% OF FEMALE TEACHERS (PUBLIC SECTOR ONLY) IN PAKISTAN

Province/Regions	2003-04		%Female Teachers	2004-05		%Female Teachers
	Teachers			Teachers		
	Female	Total		Female	Total	
PAKISTAN	233,742	625,645	37	241077	638561	38
PUNJAB	130574	298665	44	131656	303638	43
SIND	44050	138782	32	46906	139021	34
NWFP	28358	97173	29	31143	103061	30
BALUCHISTAN	10554	37699	28	11425	39073	29
AJK	9386	23594	40	9447	23599	40
FATA	1440	4942	29	1525	5318	29
FANA	5505	18442	30	5294	19037	28
ICT	3875	6348	61	3681	5814	63

Source: Pakistan Education Statistics 2003-04 & 2004-05

@: % of Female Teachers is same in AJK & FATA, it is decreasing in FANA and it is increasing in all other areas including mosque, primary, middle, high and higher-secondary stage of Public Sector only during 2004-05 as compared to 2003-04

Participation of Female Teachers as % of Total Teachers (Public Sector Only) in Pakistan up-to-higher secondary level for the years 2003-04 & 2004-05.

% OF FEMALE TEACHERS (PUBLIC SECTOR ONLY) BY STAGE IN PAKISTAN

Stage	2003-04		%Female Teachers	2004-05		%Female Teachers
	Teachers			Teachers		
	Female	Total		Female	Total	
PAKISTAN	233,742	625645	37	241,077	638561	38
Mosque	123	15327	1	154	17602	1
Primary	119,059	314712	38	125,593	323534	39
Middle	52,400	109327	48	52,838	111263	47
High	52,837	162430	33	52,763	161292	33
Higher-Sec	9,323	23849	39	9,729	24870	39

Source: Pakistan Education Statistics 2003-04 & 2004-05

@: % of Female Teachers is same at Mosque, High & Higher-Secondary stage for 2003-04 and 2004-05. It is increasing at Primary

stage but decreasing at Middle stage during 2004-05 as compared to 2003-04.

Participation of Female Teachers as % of Total Teachers (Public Sector Only) in Pakistan by Province / Region up-to-higher secondary level for the years 2003-04 & 2004-05.

% OF FEMALE STUDENTS (PUBLIC SECTOR ONLY) BY STAGE IN PUNJAB

Province/Levels	2003-04		%Female Teachers	2004-05		%Female Teachers
	Teachers			Teachers		
	Female	Total		Female	Total	
PUNJAB	130574	298665	44	131656	303638	43
Mosque	115	8915	1	134	11728	1
Primary	58587	126964	46	61272	131975	46
Middle	37070	67042	55	35808	65690	55
High	30517	85406	36	29583	83103	36
Higher-Sec	4285	10338	41	4859	11142	44

% OF FEMALE STUDENTS (PUBLIC SECTOR ONLY) BY STAGE IN SINDH

Province/Levels	2003-04		%Female Teachers	2004-05		%Female Teachers
	Teachers			Teachers		
	Female	Total		Female	Total	
SINDH	44050	138782	32	46906	139021	34
Primary	26676	95331	28	28850	95730	30
Middle	4244	9492	45	4889	10154	48
High	10908	28704	38	10993	27746	40
Higher-Sec	2222	5255	42	2174	5391	40

% OF FEMALE STUDENTS (PUBLIC SECTOR ONLY) BY STAGE IN NWFP

Province/Levels	2003-04		%Female Teachers	2004-05		%Female Teachers
	Teachers			Teachers		
	Female	Total		Female	Total	
NWFP	28358	97173	29	31143	103061	30
Mosque	0	3380	0	0	2973	0
Primary	19860	57292	35	21301	60534	35
Middle	3749	12199	31	4843	14485	33
High	3556	18992	19	3728	19397	19
Higher-Sec	1193	5310	22	1271	5672	22

% OF FEMALE STUDENTS (PUBLIC SECTOR ONLY) BY STAGE IN BALOCHISTAN

Province/Levels	2003-04		%Female Teachers	2004-05		%Female Teachers
	Teachers			Teachers		
	Female	Total		Female	Total	
BALOCHISTAN	10554	37699	28	11425	39073	29
Mosque	0	869	0		800	0
Primary	4823	16150	30	5425	16631	33
Middle	2572	8573	30	2548	8428	30
High	3159	12107	26	3452	13214	26

% OF FEMALE STUDENTS (PUBLIC SECTOR ONLY) BY STAGE IN AJK

Province/Levels	2003-04		%Female Teachers	2004-05		%Female Teachers
	Teachers			Teachers		
	Female	Total		Female	Total	
AJK	9386	23594	40	9447	23599	40
Mosque	3	1922	0	13	1823	1
Primary	2647	4334	61	2505	3969	63
Middle	3204	6810	47	3146	6910	46
High	3030	9550	32	3272	9906	33
Higher-Sec	502	978	51	511	991	52

% OF FEMALE STUDENTS (PUBLIC SECTOR ONLY) BY STAGE IN FANA

Province/Levels	2003-04		%Female Teachers	2004-05		%Female Teachers
	Teachers			Teachers		
	Female	Total		Female	Total	
FANA	1440	4942	29	1525	5318	29
Mosque	0	0		7	43	16
Primary	893	2232	40	954	2370	40
Middle	240	1038	23	260	1178	22
High	307	1672	18	304	1727	18

% OF FEMALE STUDENTS (PUBLIC SECTOR ONLY) BY STAGE IN FATA

Province/Levels	2003-04		%Female Teachers	2004-05		%Female Teachers
	Teachers			Teachers		
	Female	Total		Female	Total	
FATA	5505	18442	30	5294	19037	28
Mosque	5	241	2	0	235	0
Primary	4175	10547	40	3914	10507	37
Middle	923	3548	26	945	3797	25
High	390	3941	10	394	4207	9
Higher-Sec	12	165	7	41	291	14

% OF FEMALE STUDENTS (PUBLIC SECTOR ONLY) BY STAGE IN ICT

Province/Levels	2003-04		%Female Teachers	2004-05		%Female Teachers
	Teachers			Teachers		
	Female	Total		Female	Total	
ICT	3875	6348	61	3681	5814	63
Primary	1398	1862	75	1372	1818	75
Middle	398	625	64	399	621	64
High	970	2058	47	1037	1992	52
Higher-Sec	1109	1803	62	873	1383	63

@: % of Female Teachers is same in AJK & FANA, It is increasing in Sindh, NWFP, Balochistan & ICT but it is decreasing in Punjab and FATA during 2004-05 as compared to 2003-04.

3.11 Participation of Private Sector

a. Institutions

Percentage of Private Institutions out of Total Institutions (up-to-higher-secondary level) in Pakistan for the years 2003-04 & 2004-05

% OF PRIVATE INSTITUTIONS (UP TO H-SEC) OUT OF TOTAL IN PAKISTAN

Levels of Institutions	2003-04		% Private Institutions	2004-05		% Private Institutions
	Institutions			Institutions		
	Private	Total*		Private	Total*	
Primary*	17621	154970	11	18502	157,157	12
Middle	14999	28727	52	15749	30,418	52
High	7115	16106	44	7471	16,590	45
Higher Sec.	521	1349	39	547	1,417	39
Total	40256	201152	20	42269	205,582	21

*: Total includes Public, Other Public and Private Institutions & Primary level includes Mosque Schools

Source: Pakistan Education Statistics 2003-04 & 2004-05

@: % of Private Sector Institutions out of Total Institutions in Pakistan is increasing but increase is very low at Primary and High level. It is also observed that there is no increase at Middle and Higher-Secondary Institutions during 2004-05 as compared to 2003-04

b. Enrolment

% of Private Enrolment out of Total Enrolment (up-to-higher-secondary level) in Pakistan for the years 2003-04 & 2004-05

% OF PRIVATE ENROLMENT (UP TO H-SEC) OUT OF TOTAL IN PAKISTAN

Levels of Institutions	2003-04		% Private Enrolment	2004-05		% Private Enrolment
	Enrolment			Enrolment		
	Private	Total*		Private	Total*	
Primary*	5828337	16207287	36	6178037	17,257,948	36
Middle	1171476	4321261	27	1271051	4,550,473	28
High/'O' Level	415668	1799591	23	450999	1,880,021	24
Higher Sec/'A' Level	75424	197517	38	86738	222,238	39
Total	7490905	22525656	33	7986825	23,910,680	33

*: Total includes Public, Other Public and Private Institutions & Primary level includes Mosque Schools

Source: Pakistan Education Statistics 2003-04 & 2004-05

@: % of Private Sector Enrolment out of Total Institutions in Pakistan is same at Primary level but there is very low increase in the enrolment at Middle, High and Higher-Secondary Institutions during 2004-05 as compared to 2003-04

c. Teachers

Percentage of Private Teachers out of Total Teachers (up-to-higher-secondary level) in Pakistan for the years 2003-04 & 2004-05

% OF PRIVATE TEACHERS (UP TO H-SEC) OUT OF TOTAL IN PAKISTAN

Levels of Institutions	2003-04		% Private Teachers	2004-05		% Private Teachers
	Teachers			Teachers		
	Private	Total*		Private	Total*	
Primary*	90552	432222	21	95080	450,136	21
Middle	126872	239351	53	133215	246,666	54
High	112830	276916	41	118471	282,113	42
Higher Sec.	16598	41014	40	17428	42,954	41
Total	346852	989503	35	364194	1,021,869	36

*:Total includes Public, Other Public and Private Institutions & Primary level includes Mosque Schools

Source: Pakistan Education Statistics 2003-04 & 2004-05

@:% of Private Sector Teachers out of Total Teachers in Pakistan is increasing but increase is very low at Middle, High & Higher-Secondary level. It is also observed that there is no increase at Primary level Teachers during 2004-05 as compared to 2003-04.

3.12 Participation of Other Public Sector

a. Institutions

Percentage of Other Public Institutions out of Total Institutions (up-to-higher-secondary level) in Pakistan for the years 2003-04 & 2004-05

% OF OTHER PUBLIC INSTITUTIONS (UP TO H-SEC) OUT OF TOTAL IN PAKISTAN

Levels of Institutions	2003-04		% Other Public Institutions	2004-05		% Other Public Institutions
	Institutions			Institutions		
	Other Pub	Total		Other Pub	Total	
Primary*	3397	154970	2	3482	157,157	2
Middle	60	28727	0	60	30,418	0
High	123	16106	1	124	16,590	1
Higher Sec.	33	1349	2	34	1,417	2
Total	3613	201152	2	3700	205,582	2

*: Primary level includes Mosque Schools

Source: Pakistan Education Statistics 2003-04 & 2004-05

@: % of Other Public Sector Institutions out of Total Institutions in Pakistan is same during the year 2004-05 as compared to 2003-04.

b. Enrolment

% of Other Public Enrolment out of Total Enrolment (up-to-higher-secondary level) in Pakistan for the years 2003-04 & 2004-05

% OF OTHER PUBLIC ENROLMENT (UP TO H-SEC) OUT OF TOTAL IN PAKISTAN

Levels of Institutions	2003-04		% Other Public Enrolment	2004-05		% Other Public Enrolment
	Enrolment			Enrolment		
	Other Pub	Total		Other Pub	Total	
Primary*	243373	16207287	2	387436	17,257,948	2
Middle	71568	4321261	2	72865	4,550,473	2
High/'O' Level	43243	1799591	2	43428	1,880,021	2
Higher Sec/'A' Level	20401	197517	10	21140	222,238	10
Total	378585	22525656	2	524869	23,910,680	2

*: Primary level includes Mosque Schools

Source: Pakistan Education Statistics 2003-04 & 2004-05

@: % of Other Public Sector Enrolment out of Total Enrolment in Pakistan is same at all levels during the year 2004-05 as compared to 2003-04.

c. Teachers

% of Other Public Teachers out of Total Teachers (up-to-higher-secondary level) in Pakistan for the years 2003-04 & 2004-05

% OF OTHER PUBLIC TEACHERS (UP TO H-SEC) OUT OF TOTAL IN PAKISTAN

Levels of Institutions	2003-04		% Other Public Teachers	2004-05		% Other Public Teachers
	Teachers			Teachers		
	Other Pub	Total		Other Pub	Total	
Primary*	11631	432222	3	13920	450,136	3
Middle	3152	239351	1	2188	246,666	1
High	1656	276916	1	2350	282,113	1
Higher Sec.	567	41014	1	656	42,954	2
Total	17006	989503	2	19114	1,021,869	2

*: Primary level includes Mosque Schools

Source: Pakistan Education Statistics 2003-04 & 2004-05

@: % of Other Public Sector Enrolment out of Total Enrolment in Pakistan is same at all levels except Higher-Secondary level during the year 2004-05 as compared to 2003-04.

3.13 Apparent (gross) Intake Rate

Apparent (gross) Intake Rate (AIR or GIR) is defined as the total number of new entrants in the first grade of primary education, regardless of age, expressed as a percentage of the population at the official primary school entrance age in a specific year. It is also known as Admission Rate.

AIR =

$$\frac{\text{No. of new entrants in grade-1 of primary education in year } t}{\text{Population of official primary school age(5-9) in year } t} \times 100$$

Comparison of Apparent (gross) Intake Rate in Pakistan by Province and Regions including Public Sector only for the years 2003-04 & 2004-05

AIR IN PAKISTAN (UP TO SECONDARY) BY PROVINCE AND REGIONS

Province/ Regions	Apparent (gross) IR					
	2003-04			2004-05		
	Male	Female	Total	Male	Female	Total
Pakistan	81.34	58.89	70.49	82.67	65.24	74.24
Punjab	62.18	50.00	56.29	65.04	58.97	62.11
Sindh	119.90	79.18	100.35	117.97	79.86	99.56
NWFP	94.32	62.64	78.87	93.65	69.83	82.06
Balochistan	75.66	55.09	65.80	78.05	55.68	67.27
FATA	102.79	58.87	81.77	108.21	65.10	87.52
ICT	72.88	80.58	76.58	63.78	68.46	66.06

Source may be seen at Annex- A-3, 4

(Population data of AJK & FANA is not available)

@: There is an overall increase in AIR in Pakistan but in ICT it is decreasing during the year 2004-05 as compared to 2003-04.

3.14 Transition Rate

It is defined as the ratio of the number of students enrolled in the first grade of the highest level in a given year to the number of students enrolled in the final grade of the lower level of education in the previous year.

Transition Rate = TR =

$$\frac{\text{No. of students enrolled in the first grade of the Highest level in year - } t}{\text{No. of students enrolled in the final grade of the Lowest level in previous year}} \times 100$$

(Class-wise Enrolment for Private Sector is not available therefore Transition Rate is calculated by using the enrolment of Public Sector only).

Comparison of Transition Rate for Primary and Middle level in Pakistan (including Public Sector only) for the years 2003-04 & 2004-05

COMPARISON OF TRANSITION RATE IN PAKISTAN

Level	2003-04			2004-05		
	Male	Female	Total	Male	Female	Total
Primary to Middle	84.9	81.8	83.7	79.5	83.3	80.9
Middle to High	87.8	84.7	86.7	83.4	81.0	83.4

Source: Pakistan Education Statistics 2003-04 & 2004-05

@: Transition Rate from Primary to Middle and Middle to High level is decreasing in Pakistan but the Female Transition Rate at Primary to Middle level is increasing during 2004-05 as compared to 2003-04

Comparison of Transition Rate from Primary to Middle in Pakistan (including Public Sector Only) by Province/Regions for the years 2003-04 & 2004-05

PRIMARY TO MIDDLE TRANSITION RATE BY PROVINCE/REGIONS

Province/ Regions	2003-04			2004-05		
	Male	Female	Total	Male	Female	Total
Punjab	96.99	89.30	93.81	84.68	91.94	87.61
Sindh	63.41	75.56	67.86	63.08	71.00	65.98
NWFP	77.08	66.93	73.64	79.71	73.70	77.73
Balochistan	85.09	79.30	82.89	85.41	71.70	80.01
AJK	93.98	82.92	88.92	81.99	78.66	80.47
FANA	87.89	59.78	76.66	73.78	64.09	70.09
FATA	79.34	46.38	71.31	80.57	41.46	70.64
ICT	87.63	117.72	101.23	99.85	101.02	100.43

Source: Pakistan Education Statistics 2003-04 & 2004-05

@: Transition Rate from Primary to Middle level is increasing in NWFP only during the year 2004-05 as compared to 2003-04.

Comparison of Transition Rate from Middle to High in Pakistan (including Public Sector only) by Province/Regions for the years 2003-04 & 2004-05

MIDDLE TO HIGH TRANSITION RATE BY PROVINCE/REGIONS

Province/ Regions	2003-04			2004-05		
	Male	Female	Total	Male	Female	Total
Punjab	88.08	84.91	86.85	81.11	82.16	81.53
Sindh	102.12	100.28	101.36	93.86	87.61	91.28
NWFP	81.85	73.69	79.56	86.00	77.66	83.70
Balochistan	80.51	83.00	81.34	78.02	78.86	78.30
AJK	78.02	59.93	70.43	62.35	52.80	58.31
FANA	78.74	58.18	73.16	75.82	88.10	79.22
FATA	75.90	53.50	72.67	83.15	48.14	78.14
ICT	76.94	94.72	84.62	101.84	83.84	92.61

Source: Pakistan Education Statistics 2003-04 & 2004-05

@: Transition Rate from Middle to High level is increasing in NWFP, FANA, FATA and ICT but it is decreasing in Punjab, Sindh, Balochistan and AJK during the year 2004-05 as compared to 2003-04.

3.15 Grade Ratio/ Progression Rate

Grade Ratio or Progression Rate is defined as the ratio between the enrolments of students in two successive classes in two successive years. It is calculated by using the Grade Retention Method

or Grade Ratio Method because repeaters data is not available.

Grade Ratio =

$$\frac{\text{No. of students enrolled in a class in current year}}{\text{No. of students enrolled in previous class in previous year}} \times 100$$

Comparison of Grade Retention of Total students enrolled in Pakistan from Class-2 to Class-10(including Public Sector only) for the years 2003-04 & 2004-05.

COMPARISON OF TOTAL GRADE RATIO IN PAKISTAN UP TO CLASS-10

Years	Class1-2	Class2-3	Class3-4	Class4-5	Class5-6	Class6-7	Class7-8	Class8-9	Class9-10
2003-04	75	90	93	95	84	92	96	87	83
2004-05	83	94	95	91	81	90	92	83	84

Source may be seen at Annex-A-7, 8,9

Comparison of Grade Retention of Total Female students enrolled in Pakistan from Class-2 to Class-10 including Public Sector only for the years 2003-04 & 2004-05.

COMPARISON OF FEMALE GRADE RATIO IN PAKISTAN UP TO CLASS-10

Years	Class1-2	Class2-3	Class3-4	Class4-5	Class5-6	Class6-7	Class7-8	Class8-9	Class9-10
2003-04	73	90	93	92	82	93	97	85	79
2004-05	85	98	98	92	83	92	93	81	92

Source may be seen at Annex-A-7, 8, 9

Comparison of Grade Retention of Total Male students enrolled in Pakistan from Class-2 to Class-10 including Public Sector only for the years 2003-04 & 2004-05.

COMPARISON OF MALE GRADE RATIO IN PAKISTAN UP TO CLASS-10

Years	Class1-2	Class2-3	Class3-4	Class4-5	Class5-6	Class6-7	Class7-8	Class8-9	Class9-10
2003-04	76	90	94	96	85	91	95	88	86
2004-05	81	91	93	90	79	88	91	83	80

Source may be seen at Annex-A-7, 8,9

Comparison of Grade Retention (Total) in Pakistan by Province and Regions from Class 5-6 & Class 9-10 including Public Sector only for the years 2003-04 & 2004-05.

GRADE RATIO IN PAKISTAN BY PROVINCE/REGIONS

Province/Regions	2003-04		2004-05	
	Class 5 to 6	Class 9 to 10	Class 5 to 6	Class 9 to 10
Pakistan	83.67	83.07	80.93	84.32
Punjab	93.81	81.61	87.61	85.37
Sindh	67.86	95.76	65.98	85.77
NWFP	73.64	78.36	77.73	84.41
Balochistan	82.89	89.03	80.01	89.70
AJK	88.92	63.36	80.47	61.36
FANA	76.66	64.20	70.09	71.61
FATA	71.31	86.43	70.64	79.60
ICT	101.23	80.57	100.43	79.72

Source may be seen at Annex-A- 7,8,9.

Source: Pakistan Education Statistics 1997-98 & 2004-05

@: Grade Ratio from class 5-6 is increasing in NWFP only and from class 9-10 it is decreasing in Sindh, AJK, FATA & ICT but increasing in other areas during 2004-05 as compared to 2003-04

3.16 Completion Rate (CR)

It is defined as the percentage of students who successfully completed (graduated) the particular cycle of education to those enrolled in the first year of the cycle. The completion rate at primary level for the year 2003-04 can be calculated as:

Completion Rate =

$$\frac{\text{No. of graduates at Primary level during 2003 - 04}}{\text{No. of students enrolled in grade - 1 during 1998 - 99}} \times 100$$

Similarly Primary Completion Rate for the year 2004-05 can be calculated as:

Completion Rate =

$$\frac{\text{No. of graduates at Primary level during 2004 - 05}}{\text{No. of students enrolled in grade - 1 during 1999 - 00}} \times 100$$

Similarly Middle Level Completion Rate for the year 2003-04 can be calculated as:

Completion Rate =

$$\frac{\text{No. of graduates at Middle level during 2003 - 04}}{\text{No. of students enrolled in grade - 6 during 2000 - 01}} \times 100$$

Middle Level Completion Rate for the year 2004-05 can be calculated as:

Completion Rate =

$$\frac{\text{No. of graduates at Middle level during 2004 - 05}}{\text{No. of students enrolled in grade - 6 during 2001 - 02}} \times 100$$

Comparison of Completion Rate in Pakistan (including Public Sector Only) at Primary and Middle levels for the years 2003-04 & 2004-05

COMPARISON OF COMPLETION RATE IN PAKISTAN

Level	2003-04			2004-05		
	Male	Female	Total	Male	Female	Total
Primary	46.7	51.7	46.7	43.7	51.1	46.4
Middle	84.4	56.6	71.6	70.6	69.8	70.3

Source: Pakistan Education Statistics 1997-98, 1999-2000, 2003-04 & 2004-05

@: Primary Completion Rate is decreasing and Middle Completion Rate is also decreasing except Female Completion Rate during 2004-05 as compared to 2003-04

Comparison of Completion Rate in Pakistan by Province/Regions (including Public Sector Only) from Primary to Middle level for the years 2003-04 & 2004-05

PRIMARY COMPLETION RATE BY PROVINCE/REGIONS

Province/Regions	2003-04			2004-05		
	Male	Female	Total	Male	Female	Total
Punjab	46.41	63.02	51.78	43.24	58.15	48.51
Sindh	28.15	36.95	31.18	28.22	34.57	30.42
NWFP	57.23	41.98	51.46	71.87	53.60	64.96
Balochistan	33.07	31.48	32.47	32.70	29.69	31.57
AJK	93.76	75.14	84.79	80.75	70.42	75.77
FANA	65.20	47.24	58.29	72.98	57.26	66.60
FATA	42.32	36.05	41.19	41.66	25.13	37.94
ICT	75.26	95.39	84.65	86.92	95.20	90.82

Source: Pakistan Education Statistics 1997-98, 1999-2000, 2003-04 & 2004-05

@: Primary Completion Rate is increasing in NWFP, FANA & ICT and it is decreasing in other areas during the year 2004-05 as compared to 2003-04

Comparison of Completion Rate in Pakistan by Province / Regions (including Public Sector Only) from Middle to High level for the years 2003-04 & 2004-05

MIDDLE COMPLETION RATE BY PROVINCE/REGIONS

Province/Regions	2003-04			2004-05		
	Male	Female	Total	Male	Female	Total
Punjab	77.38	70.06	74.43	68.54	70.19	69.20
Sindh	81.04	83.49	82.03	81.61	83.03	82.17
NWFP	187.08	21.10	61.38	76.43	62.80	72.41
Balochistan	57.62	61.68	58.93	58.15	64.37	60.16
AJK	63.70	46.84	56.44	50.31	42.17	46.85
FANA	49.37	68.19	52.49	53.60	72.22	58.22
FATA	51.45	68.18	52.83	58.16	43.53	56.48
ICT	93.90	88.38	91.15	83.64	81.94	82.84

Source: Pakistan Education Statistics 1997-98, 1999-2000, 2003-04 & 2004-05

@: Primary Completion Rate is decreasing in Balochistan, AJK & ICT and it is increasing in other areas during the year 2004-05 as compared to 2003-04.

3.17 Literacy Rate

Literacy Rate can be defined as the proportion of literate persons in the population in a specific year w.r.t age. A person who can read and write is known as Literate person.

$$\text{Literacy Rate} = \frac{\text{No. of literate persons of age group } 10+ \text{ in year } t}{\text{Total population in the age group } 10+ \text{ in year } t} \times 100$$

Comparison of Literacy Rate in Pakistan (including Public, Other Public and Private Sector) of the age group 10+ for the years 2003-04 & 2004-05.

Literacy Rate

	(Population 10+) (in %)	
	2003-04	2004-05
Total	51.6	53.0
Male	63.7	65.0
Female	39.2	40.0

@: Literacy Rate (Total, Male & Female) of aged 10+ is increasing in Pakistan during the year 2004-05 as compared to 2003-04

Literacy Rate in Pakistan by Province (age group 10+ and 15+) for the year 2004-05.

(Percentage)

LITERACY RATE IN PAKISTAN BY PROVINCE

Province	Age 10+		Age 15+	
	Female	Total	Female	Total
Pakistan	40	53	36	50
Punjab	44	55	40	52
Sindh	41	56	38	54
NWFP	26	45	22	40
Balochistan	19	37	19	37

Source: PSLM Survey, FBS, 2004-05

@: Literacy Rate of aged 10+ in Punjab & Sindh is higher than the LR in NWFP & Balochistan during 2004-05. Similarly Literacy Rate of aged 15+ in Punjab & Sindh is higher than the LR in NWFP & Balochistan during the year 2004-05.

3.18 Learning Achievements

Learning Achievements at Primary level in Public Schools for the years 1999-2000, 2001-2002 & 2003-04 according to the study "Quality of Education" conducted by AEPAM.

COMPARISON OF % SCORE IN PUBLIC SCHOOLS

Subject	% Score			
	1999-00	2001-02	2003-04	2004-05
Maths	58	48	46	45
Urdu	72	60	60	57
Science	72	65	59	52

@: There is a decreasing trend in learning achievements in Maths, Urdu & Science subjects at Primary level (including Public Schools only) for the years 1999-00 to 2004-05.

3.19 Budget Allocation

Comparison of Allocation of Budget (development and current) in Pakistan by Province for the years 2003-04 & 2004-05

ALLOCATION OF BUDGET IN PAKISTAN BY PROVINCE

Pak/Province	2003-04(Rs. In million)			2004-05(Rs. In million)		
	Current	Development	Total	Current	Development	Total
Pakistan	90200.928	30287.321	120488.249	107815.7	34387.872	142203.572
Federal (Total)	17027.895	10436.057	27463.952	21194.002	15087.587	36281.589
Punjab	38487.208	14014.907	52502.115	44074.301	11235.181	55309.482
Sindh	17337.124	1677.867	19014.991	23241.596	2223.04	25464.636
NWFP	11361.138	2680.932	14042.07	13280.965	3794.1	17075.065
Balochistan	5987.563	1477.558	7465.121	6024.836	2047.964	8072.8

Source: Budgetary Allocations for Education, P & P Wing, MoE March 2005.

Budget detail as % of GDP

Budget Detail	2000-01	2001-02	2002-03	2003-04	2004-05
Aggregate (Current + Development) Public expenditure on Education (Rs. In Billion)*	75.887	78.873	89.769	120.480	132.918
##: As Percentage of GDP	1.96	1.98	2.14	2.70	2.73
##: As Percentage of Recurrent Budget	14.64	15.03	13.89	16.87	10.51
##: As Percentage of Development Budget	10.22	8.92	8.02	19.62	15.33

*:Includes expenditure on education by all ministries, provinces and other federal units.

Pro/Regions	2003-04					
	Enrolment (Public + Private)			Population (000)		
	M	F	T	M	F	T
Punjab (Primary)	4924144	3774135	8698279	5474	5136	10610
(Middle)	1375953	1047396	2423349	3085	2869	5954
(High)	553169	399635	952805	2014	1855	3869
Total	6853267	5221167	12074435	10573	9860	20433
Sindh (Primary)	2168897	1407680	3576577	2217	2048	4265
(Middle)	466079	340658	806737	1232	1097	2329
(High)	238692	176310	415003	810	716	1526
Total	2873669	1924649	4798319	4259	3861	8120
NWFP (Primary)	1547621	807737	2355359	1348	1282	2630
(Middle)	460750	186487	647238	791	761	1552
(High)	180690	67398	248088	527	510	1037
Total	2189061	1061623	3250685	2666	2553	5219
Balochistan						
(Primary)	322689	201510	524200	515	474	989
(Middle)	78243	40612	118856	320	282	602
(High)	30908	14946	45854	212	185	397
Total	431842	257068	688911	1047	941	1988
AJK (Primary)	146996	130705	277701	0	0	0
(Middle)	72390	53387	125777	0	0	0
(High)	28573	15414	43987	0	0	0
Total	247959	199506	447465			
FANA (Primary)	47641	34122	81763	0	0	0
(Middle)	17154	7228	24382	0	0	0
(High)	6249	1676	7925	0	0	0
Total	71044	43026	114070			
FATA (Primary)	244765	82821	327587	243	223	466
(Middle)	49055	7439	56494	145	129	274
(High)	16535	1918	18454	98	86	184
Total	310356	92178	402534	486	438	924
ICT (Primary)	65169	57277	122446	54	50	104
(Middle)	23070	23788	46858	29	26	55
(High)	11700	12530	24230	19	17	36
Total	99939	93595	193534	102	93	195
PAK (Primary)	9467925	6495988	15963914	9851	9213	19064
(Middle)	2542696	1706997	4249693	5602	5164	10765
(High)	1066518	689829	1756348	3680	3369	7050
Total	13077139	8892815	21969954	19133	17746	36879

Source: Pakistan Education Statistics 2003-04

Pro/Regions	2004-05					
	Enrolment (Public+Private)			Population (000)		
	M	F	T	M	F	T
Punjab (Primary)	5136817	4131456	9268273	5586	5223	10809
(Middle)	1435383	1132853	2568235	3067	2887	5954
(High)	562824	440644	1003468	2002	1859	3861
Total	7135023	5704953	12839976	10655	9969	20624
Sindh (Primary)	2272867	1547601	3820467	2282	2133	4415
(Middle)	488928	358291	847219	1224	1089	2313
(High)	243900	176246	420146	801	705	1506
Total	3005695	2082137	5087832	4307	3927	8234
NWFP (Primary)	1575440	875752	2451192	1370	1298	2668
(Middle)	485960	210052	696012	775	745	1520
(High)	201081	73047	274128	519	503	1022
Total	2262481	1158850	3421332	2664	2546	5210
Balochistan						
(Primary)	332007	204188	536195	510	474	984
(Middle)	79278	41663	120941	316	281	597
(High)	32430	15883	48313	213	186	399
Total	443715	261734	705450	1039	941	1980
AJK (Primary)	127462	123221	250683	0	0	0
(Middle)	62750	50219	112969	0	0	0
(High)	23552	14853	38405	0	0	0
Total	213764	188293	402057			
FANA (Primary)	47238	36348	83586	0	0	0
(Middle)	16140	8558	24698	0	0	0
(High)	5971	2844	8815	0	0	0
Total	69349	47750	117099			
FATA (Primary)	251337	83343	334680	246	227	473
(Middle)	51787	6886	58673	140	125	265
(High)	17687	1736	19423	95	85	180
Total	320812	91965	412777	481	437	918
ICT (Primary)	67885	57550	125435	57	54	111
(Middle)	24987	23874	48861	29	26	55
(High)	12051	11845	23895	19	17	36
Total	104922	93269	198191	105	97	202
PAK (Primary)	9811053	7059459	16870512	10051	9409	19460
(Middle)	2645212	1832396	4477608	5551	5153	10705
(High)	1099497	737097	1836593	3649	3355	7003
Total	13555762	9628951	23184713	19251	17917	37168

Source: Pakistan Education Statistics 2004-05

A-3

2003-04	Class-1 Enrolment			Population (000)/class-1		
	Male	Female	Total	Male	Female	Total
Punjab	680794	513630	1194424	1094800	1027200	2122000
Sindh	531652	324322	855974	443400	409600	853000
NWFP	254275	160598	414873	269600	256400	526000
Balochistan	77931	52229	130160	103000	94800	197800
FATA	49957	26254	76211	48600	44600	93200
ICT	7871	8058	15929	10800	10000	20800
Total	1602480	1085091	2687571	1970200	1842600	3812800

Source: Pakistan Education Statistics 2003-04

A-4

2004-05	Class-1 Enrolment			Population (000)/class-1		
	Male	Female	Total	Male	Female	Total
Punjab	726637	615985	1342622	1117200	1044600	2161800
Sindh	538434	340670	879104	456400	426600	883000
NWFP	256600	181285	437885	274000	259600	533600
Balochistan	79613	52783	132396	102000	94800	196800
FATA	53237	29556	82793	49200	45400	94600
ICT	7271	7394	14665	11400	10800	22200
Total	1661792	1227673	2889465	2010200	1881800	3892000

Source: Pakistan Education Statistics 2004-05

A-5

Stage	2003-04					
	Enrolment by stage			Population(000)		
	M	F	T	M	F	T
Pre-Primary	2000538	1573391	3573929	3953	3726	7679
Primary	9601462	6605824	16207286	9851	9213	19064
Middle	2584043	1737218	4321261	5602	5164	10765
High/ 'O' Level	1090599	708991	1799590	3680	3369	7050
Higher Sec./ 'A' Level	104450	93067	197517	3705	3385	7092
TOTAL	15381092	10718491	26099583	26791	24857	51650

Public, Private and Other Public Enrolment by Stage in Pakistan
Source: Pakistan Education Statistics 2003-04

A-6

Stage	2004-05					
	Enrolment by stage			Population(000)		
	M	F	T	M	F	T
Pre-Primary	2202080	1873178	4075258	3946	3721	7668
Primary	10039441	7218507	17257948	10051	9409	19460
Middle	2687851	1862622	4550473	5551	5153	10705
High/ 'O' Level	1123720	756302	1880021	3649	3355	7003
Higher Sec./ 'A' Level	119386	102851	222238	3755	3418	7172
TOTAL	16172478	11813459	27985938	26952	25056	52008

Public, Private and Other Public Enrolment by Stage in Pakistan
Source: Pakistan Education Statistics 2004-05

A-7

Class-wise Enrolment (Public Sector only)			
Years	Class-wise Enrolment 2002-03		
	Male	Female	Total
Class 1	1688795	1144931	2833726
Class 2	1311472	861221	2172693
Class 3	1145620	743819	1889439
Class 4	985925	634800	1620725
Class 5	851178	537858	1389036
Class 6	682320	415555	1097875
Class 7	591358	353970	945328
Class 8	547805	321966	869771
Class 9	420699	285685	706384
Class 10	322669	212580	535249

Source: Pakistan Education Statistics 2002-03

A-8			
Class-wise Enrolment (Public Sector only)			
Years	Class-wise Enrolment 2003-04		
	Male	Female	Total
Class 1	1643865	1121631	2765496
Class 2	1279263	840362	2119625
Class 3	1177129	773023	1950152
Class 4	1073473	692474	1765947
Class 5	947865	586492	1534357
Class 6	722512	439700	1162212
Class 7	620725	386320	1007045
Class 8	563876	345084	908960
Class 9	481045	272846	753891
Class 10	360443	226346	586789

Source: Pakistan Education Statistics 2003-04

A-9			
Class-wise Enrolment (Public Sector only)			
Years	Class-wise Enrolment 2004-05		
	Male	Female	Total
Class 1	1698501	1263293	2961794
Class 2	1336647	948526	2285173
Class 3	1167801	824045	1991846
Class 4	1094208	758260	1852468
Class 5	966786	634408	1601194
Class 6	753141	488611	1241752
Class 7	637770	403774	1041544
Class 8	564694	358567	923261
Class 9	470415	279524	749939
Class 10	384924	250731	635655

Source: Pakistan Education Statistics 2004-05

List of Source

- Summary Pakistan Education Statistics 2004-05
- Pakistan Education Statistics 2004-05
- Pakistan Education Statistics 2003-04
- Pakistan Education Statistics 2002-03
- Pakistan Education Statistics 2001-02
- Pakistan Education Statistics 2000-01
- Pakistan Education Statistics 1999-2000
- Pakistan Education Statistics 1998-1999
- Pakistan Education Statistics 1997-1998
- Pakistan Education Statistics 1996-1997
- Pakistan Education Statistics 1995-1996
- Pakistan Education Statistics 1994-1995
- Pakistan Education Statistics 1993-1994
- Pakistan Education Statistics 1992-1993
- District Education Fact Files, 2003-04
- District Education Fact Files, 2004-05
- Population data:
National Institute of Population Studies (NIPS)
- Dr. P.A. Shami, Dawood Shah, Mirza Tauhiduddin Ahmad, (2005), National Education Core Indicators and Regional Comparison, AEPAM,
- Dr. P.A. Shami, Khawaja Sabir Hussain, (2005), Quality of Education, Learning Achievements at Primary Level, AEPAM.

ABOUT THE ACADEMY

Academy of Educational Planning and Management (AEPAM) was established in March 1982 and now functioning as a subordinate office of the Ministry of Education.

VISION

Development of a quality assurance institution, to facilitate and support internationally compatible and dynamic system of education, policymaking, management and implementation.

MISSION

With a national commitment to facilitate development and promotion of education through cooperative policy, planning, innovation, capacity building, quality assurance, watch of implementation, establishment and up-gradation of information system and data bank.

CHARTER OF AEPAM

The new charter of AEPAM is very helpful for assisting the Ministry of Education in formulation of Education Policies as well as short and long term plans. The main points of Charter are as under:

- Establish and house 'Think Tank'.
- Monitoring and evaluation of education sector projects/ programs.
- Strengthening of NEMIS and establishment of National Databank.
- Coordination with the Provincial and District organization and educational institutions.
- Capacity Building of Education Managers.
- Staff College for officers of Educational Institutions.
- Capacity building of Teachers in IT/ Computer.

The Academy has conducted about 320 training programs. A corps of more than 5500 educational personnel has been trained. More than 265 research studies, surveys and reports and numerous research papers and 162 Annual Education Statistics reports, surveys and studies have been published.